



Beauty Catalogue

2019

Catalogue B: Beauty	
Nail Files	3
Buffers & Shiners	3
Foot Files	4
Footcare Instruments	4
Skin Science Product Range	5
Mani & Pedi Accessories	5
Polish Accessories	5
Polish Display Stands	5
Upfront Nail Treatments	6
Arctic Ice Nail Treatments	6
Beauty Industry Disposables	7-8
Eyelash Tinting – Julienne	9
Eyelash Tinting Accessories	9
Eyelash Tinting – Refectocil	9-10
Artificial Lashes	11
Aromatherapy Essential Oils	12-14
Massage Oils	14
Soy Candles	15
Hot Stones	15
⌘ Waxing Systems Overview	16
⌘ Cartridges	17
⌘ Strip Wax tins 800g	18
⌘ Hot Wax Beans 1kg	18
⌘ Film Wax Beans 1kg	18
⌘ Paraffin Wax	19
⌘ Waxing Lotions & Oils	19
Waxing Accessories	20
Waxing Exfoliators	20
⌘ Waxing kits	21
Equipment for Waxing	22
SS Waxing Systems	23
Mask Brushes & Accessories	24
Tweezers & Comedone Extractors	24
Sterilisers & Hygiene	25
Sterilisers – Steritech	25
Sterilisers – Quadex	26-28
Linens & Towels	28
SKNlogic SkinCare	29-33
Equipment for Facials	34-36
Equipment for Slimming	36-37
Furniture for Salon	37-40
Airbrush Systems	40
Miscellaneous – Hair Accessories	41
Terms & Conditions	42

Catalogue A: Nails & Nail Enhancements	
Nail Files	3
Buffers & Shiners	3
Foot Files	4
Footcare Instruments	4
Skin Science Product Range	5
OP Original Polish Color Chart	5
Magnetic Laquer Polish & Magnets	6
Mani & Pedi Accessories	7
Polish Accessories	7
Polish Display Stands	7
Upfront Nail Treatments	8
Arctic Ice Nail Treatments	8
Arctic Ice Gel Polish overview	9
Arctic Ice Gel Polish Color Charts	10-11
Arctic Ice Color Gel Chart	12
Arctic Ice Easy-Off Color Gel Chart	13
Nail Brushes	13
Arctic Ice Fibre & Silk Systems	13
Arctic Ice Acrylic Systems – Monomers	14
Arctic Ice Acrylic Systems – Polymers	15
Arctic Ice Dip System	15
Accessories for Acrylic Systems	15
Nail Tips	16
Equipment for Nail Systems	16
Beauty Industry Disposables	17-18
Sterilisers & Hygiene	19-22
Terms & Conditions	23



Catalogue C: Nail Art



Catalogue D: Makeup for Professionals

Nail Files

Broad selection of nail files made from high quality sanding paper for use in manicures & pedicures as well as artificial nail applications. All sealed in a polybag for your protection (the lower the number the rougher the file)



CODE	GRIT	COLOUR
ARC-80M	#80 Mylar	Red
ARC-80B	#80/80	Black
ARC-100B	#100/100	Black
ARC-100Z	#100/100	Zebra
ARC-100/180Z	#100/180	Zebra
ARC-180Z	#180/180	Zebra
ARC-180ZT	#180/180 tapered	Zebra
ARC-180B	#180/180	Black
ARC-120/240	#120/240	Blue
ARC-120/240T	#120/240 tapered	Blue
ARC-240/280B	#240/280	Black

CODE	DESCRIPTION	Item
ARC-QSB	Miracle Shiner	Fig. 1

Re-Usable & Novelty files

A range of files that can be re-used by replacing the grits along with files for Retail



Fig. 9



Fig. 10



Fig. 11

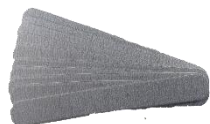


Fig. 12

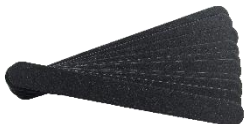


Fig. 13



Fig. 14



Fig. 15



Fig. 16

Fig. 17

Fig. 18

Buffers & Shiners

Various buffers and shiners made from high quality material. Ease-of-use quick shine miracle shiners in block or file form



Fig. 1



Fig. 2



Fig. 3



Fig. 4



Fig. 5



Fig. 6



Fig. 7



Fig. 8

CODE	DESCRIPTION/GRIT	Item
ARC-QSB	Miracle Shiner Block	Fig. 1
ARC-QSB4	Miracle Shiner (4 part)	Fig. 2
NF-4SB	4-way Shining Block	Fig. 3
ARC-QSB1	Miracle Shiner File	Fig. 4
NGCB	'Girlfriend' Shiner	Fig. 5
ARC-WB	White Sanding Block	Fig. 6
ARC-SP-O	Orange buffer #180	Fig. 7
ARC-SP-P	Purple Buffer #80	Fig. 8

Re-Usable & Novelty files

CODE	DESCRIPTION/GRIT	Item
ARC-ACRFILE	Acrylic File	Fig. 9
ARC-CORE	Refil Core 5s	Fig. 10
ARC-DISP100B	Replaceable grits #100 black 10s	Fig. 11
ARC-DISP180Z	Replaceable grits #180 zebra 10s	Fig. 12
ARC-DISP240B	Replaceable grits #240 black 10s	Fig. 13
ARC-FANTASY	#180/240 Fantasy File	Fig. 14
ARC-MOD	Emery boards 5s	Fig. 15
ARC-KEYSTR	Keyring file 'Strawberries'	Fig. 16
ARC-KEYDOL	Keyring file 'Dolphins'	Fig. 17
ARC-KEYPAN	Keyring file 'Pandas'	Fig. 18

Foot Files & Instruments

Broad selection of foot files made from high quality materials and sanding paper for use in pedicures and manicures, including re-usable footfiles. All sealed in a polybag for your protection (the lower the number the rougher the file)



Fig. 1



Fig. 2



Fig. 3



Fig. 4



Fig. 5



Fig. 6



Fig. 7 Various colours



Fig. 8



Fig. 9

CODE	DESCRIPTION	Item
ARC-C2RP	Re-usable Perspex Foot File	Fig. 1
ARC-C2#100	Replaceable grits #100 5s	Fig. 2
ARC-C2#180	Replaceable grits #180 5s	Fig. 3
ARC-WFILE	Wooden Foot File (rough)	Fig. 4
AS-RASP	Foot Rasp	Fig. 5
PEDIPACK	6-piece Pedipack	Fig. 6
BX0024	Manicure brush with handle	Fig. 7
NTS	Toe Separators pr	Fig. 8
BB2000	Polyfoam Pedicure Slippers pr	Fig. 9
ARC-NCP	Plastic Cuticle Pusher	Fig.10
NOS-PCK	Long Orangewood sticks 15cm 10s	Fig.11
5HP-PCK	Short Orangewood sticks 10cm 10s	Fig.12
COMBOTRIM	Plastic Cuticle Pusher/trimmer	Fig.13
STAD-24	Corn/Callous Slicer	Fig.14
3100	Spare blades for slicer 10s	Fig.15
ZH-4022	Metal Cuticle pusher	Fig.16
SG-3205L	Cuticle Nipper (1/2 jaw)	Fig.17
5151	Toe Nail Clipper (large)	Fig.18
STAD-9	Podiatrist Toe Nail Nipper	Fig.19



Fig. 10



Fig. 11



Fig. 12



Fig. 13



Fig. 14



Fig. 15



Fig. 16



Fig. 17



Fig. 18



Fig.19

Mani & Pedi Products

Skin Science Labs manufactures a proudly South African range of manicure & pedicure products made from high quality materials. The 1litre and 1kg Cabine sizes are ideal for use inside Salons and Spas making this an affordable solution for profitable treatments. The majority of the products have a refreshing and invigorating peppermint fragrance. The massage medium however is a gentle 'Oceanic' aroma, ideal for relaxation.



Fig. 1



Fig. 2



Fig. 3



Fig. 4



Fig. 5



Fig. 6

CODE		DESCRIPTION	Item
SK-PFS1LT	(liquid)	Peppermint Foot Soak 1Lt	Fig. 1
SK-FS	(powder)	Peppermint Foot Soak 1kg	Fig. 2
SK-FSC		Peppermint Foot Scrub 1kg	Fig. 3
SK-FHM		Foot & Hand Masque 1kg	Fig. 4
SK-FB		Foot Balm 1kg	Fig. 5
SK-MAS05		Massage Cream 'Oceanic'	Fig. 6

OP Original Polish

Op 'Original Polish' is an affordable range of Nail Polish which has proven especially popular with Colleges and students. Ideal for use in everyday manis or pedis or for use in promotions. (see Nail catalogue for colors)



Accessories



Fig. 1
440x290m



Fig. 2



Fig. 2A



Fig. 3



Fig. 4



Fig. 5



Fig. 6



Fig. 7



Fig. 8



Fig. 9



Fig. 10



Fig. 13 excl. polish



Fig. 11 excl. polish



Fig. 12 excl. polish

CODE	Description	Fig.
AB	Appointment Book	Fig. 1
ARC-TWLC	Twistlock Pump Dispensor	Fig. 2
ARC-TWLC-SP	Twistlock Pump Dispensor	Fig. 2A
NFTG	French Tip Guides	Fig. 3
AS-CC48	Empty Color Chart (48)	Fig. 4
AS-TB	Plastic Tool Box for nail files	Fig. 5
PB0027	Plastic Manicure Bowl	Fig. 6
AS-PCP	Polish Corrector Pen	Fig. 7
AS-PCP1	Refill nibs for polish corrector pen (5s)	Fig. 8
N-POLISH	Polish display stand (small)	Fig. 9
N-DISPLAY	Nail Organiser shelf (empty)	Fig. 10
DISPLAY-H	Nail polish display stand 50 polish empty	Fig. 11
DISPLAY-F	Nail polish display stand 60 polish empty	Fig. 12
DISPAY-G	Nail polish display stand 90 polish empty	Fig. 13

Upfront Nail Treatments

A range of quality affordable Nail Treatments for manicures and pedicures.



NNTB NNTT NNTC NNT4 UCC NNTB3 NNTT3

CODE	DESCRIPTION
NNTB	Base Coat 15ml
NNTT	Top Coat 15ml
NNTC	Cuticle Remover 15ml
UCC	Cuticle Cream 15ml
NNT4	Ridge filler 15ml
NNTB3	Base Coat Refill 100ml
NNTT3	Top Coat Refill 100ml
NNTC3	Cuticle Remover Refill 100ml

Arctic Ice Nail Treatments

A range of quality Nail Treatments from Arctic Ice for manicures and pedicures and also artificial nail enhancements. *Full instructions, warnings & INCI can be found in the Arctic Ice Product Catalogue.*



ARC-SNG200
ARC-SNG75

Spray n Go Polish Dry to decrease the drying time of nail polish (can be used as a spray or dropper application). To use: Apply polish as directed, wait a few seconds then hold the Spray n Go approximately 10cm away from nail and spray polish

Anti-Fungal Solution is a topical formula that contains tolnaftate, an ingredient typically used to treat nail fungus problems and the prevention of the growth of fungus. Cleanse nail plate with soap and water, allow to dry thoroughly. Apply a thin layer over nails and allow to dry completely. Should be used on all clients and nail technicians.

Polar Seal is a nail sealer that produces a high shine, durable finish and protects nails from yellowing due to UV light exposure. It is ideal for customers who frequent tanning beds.

Over Artificial Nails: Apply Polar Seal to completely cover the nail. Allow to dry for 2-3 minutes. Apply a second coat if desired.
Over Polish: Apply a layer of Polar Seal over dried polish for a high gloss shine. Allow to dry completely, approximately 2-3 minutes.

CODE	DESCRIPTION
ARC-SNG200	Spray n Go Polish Dry 200ml Refill
ARC-SNG75	Spray n Go Polish Dry 75ml c/w spray
ARC-CP	Cuticle Oil 15ml peach/orange
ARC-CP80	Cuticle Oil 80ml peach/orange
ARC-CTT	Cuticle Oil 15ml tea tree
ARC-CTT80	Cuticle Oil 80ml tea tree
ARC-DC	Dual Coat 15ml
ARC-TC	Titanium Coat 15ml
ARC-	Aurora Shimmer Coat 15ml
ARC-NST	Nail Rescue Gel 15ml
ARC-NST80	Nail Rescue Gel 80ml
ARC-AF	Anti-Fungal Treatment 15ml
ARC-AF80	Anti-Fungal Treatment 80ml
ARC-NP	Nail prep 15ml (sanitise & dehydrate nail plate)
ARC-NP80	Nail Prep 80ml
ARC-SEAL	Polar Seal 15ml
ARC-ICE	Ice Cap 15ml
ARC-UB	Ultrabond Primer 15ml (non acidic primer)
ARC-UB80	Ultrabond Primer 80ml

Dual Coat is an AirDry Base & Top Coat reinforced with titanium to add strength to natural nails and make them more resistant to breaks and splits. It has excellent adhesion to the nails and gives a high shine finish. Dual Coat Base & Topcoat is a perfect all-in-one coating that can be used as a basecoat and a topcoat. **Nail Strengtheners:** Apply 2 coats every 3-4 days on clean dry nails (wait 2 minutes between each coat). **Base/Top Coat:** Adds strength and prevents staining as a base coat, adds a high gloss as a top coat (wait 2 minutes before applications). *Toluene, DBP, Camphor, Formaldehyde Resin (TFR) and formaldehyde free*

Titanium Coat is a fast AirDry, non-yellowing topcoat with excellent flow properties. The topcoat finishes to a high shine and can be used over polish or artificial nails. Superior shine and 'No Chip' properties. Only for use on artificial nails or nail polish, not for use on natural unpainted nails. *Toluene, DBP, Camphor, Formaldehyde Resin (TFR) and formaldehyde free*

Aurora Shimmer Coat is a fast AirDry superior shine 'No Chip' top coat with crystal additive for shimmer. *Shake well before use*

Nail Rescue Gel is an Air Dry soothing nail strength treatment formulated from bio-derived ingredients, including Bamboo extract. Bamboo is known to support nail health, reducing ridges and improving lustre to natural nails that have experienced some damage through extended nail enhancement product usage

- Provides a flexible protective shield to the natural nail
- Robust film for enforced strength
- Remove all nail products from nails, clean and dry nails and gently push back the cuticles. Apply one coat of Nail Rescue Gel and allow to dry for 2 minutes, apply a second coat and allow to dry for 2-3 minutes. Reapply every week by removing all product and start again

Ice Cap is a fast drying UV topcoat. It sets in 60 seconds under UV light, and produces a high glossy finish over artificial nails or over nail polish. It hides ridges, strengthens the nail, extends the wear of nail polish and brightens the appearance. Not for use over natural nails. *Toluene, DBP, Formaldehyde Resin and formaldehyde free.*

Disposables - Outer wear



Fig. 1



Fig. 2



Fig. 3



Fig. 4



Fig. 5



Fig. 6



Fig. 7



Fig. 8



Fig. 9



Fig. 10



Fig. 11



Fig. 12



Fig. 13

CODE	Description	Fig.
G-14007	G-strings navy (50pc)	Fig. 1
BOXER	Boxers navy / black (10pc)	Fig. 2
G-PANTIE	Panties white (50pc)	Fig. 3
DISP/CAPS-100	Disposable Caps 100s	Fig. 4
SHOWERCAP-100S	Showercaps plastic 100s	Fig. 5
C-010(PCK)	Disposable headbands 10s	Fig. 6
SUMS00E	Surgical face masks 50s	Fig. 7
SLIPPER	Disposable towelling slipper	Fig. 8
BB2000	Polyfoam slippers pr	Fig. 9
LNMB0X	Latex gloves med (100single)	Fig. 10
LNSB0X	Latex gloves sm (100single)	Fig. 10
VINYL-MED	Vinyl gloves med (100single)	Fig. 11
VINYL-SM	Vinyl gloves sm (100single)	Fig. 11
NITRILE-M	Nitrile gloves med (100single)	Fig. 12
NITRILE-S	Nitrile gloves sm (100single)	Fig. 12
NITRILE-XS	Nitrile gloves x-sm (100single)	Fig. 12
H-FC200	Finger cotts (latex) 200s	Fig. 13

Disposables - Salon (Limited stock)



Ltd. 1



Ltd. 2



Ltd. 3



Ltd. 4



Ltd. 5



Ltd. 6

CODE	Description	Fig.
M-S21	Disposable waterproof bedcover ea	Ltd. 1
M-T31A1	Disposable towel (30cmx30cm) 50s	Ltd. 2
CSW-B	Cotton swabs B (bag of 100)	Ltd. 3
CSW-D	Cotton swabs D (bag of 100)	Ltd. 3
M-U54	Disposable PE plastic slimming suit ea	Ltd. 4
M-F30A2	Facial Wipes (2rolls) 30cm*30cm*25m	Ltd. 5
YW-PUFF	Facial Puffs 100s (with finger insert)	Ltd. 6

Disposables - Salon (standard items)



Fig. 1



Fig. 2



Fig. 3



Fig. 4



Fig. 5



Fig. 6



Fig. 7



Fig. 8



Fig. 9



Fig. 10



Fig. 11

CODE	Description	Fig.
C/BUDS	Cotton buds 100s	Fig. 1
C/BUDS-100G	Cotton buds 100g (2nds ± 300)	--
C/BUDS-WOOD	Cotton buds with wooden stem 100s	Fig. 2
6009663563789	Cotton Pads 80s (stitched)	Fig. 3
BCS-SP	Body Exfoliating Sponge ea	Fig. 4
COS002	Facial Sponge PVA pair (soft)	Fig. 5
COS001	Facial Sponge Cellulose (bag of 25 pairs)	Fig. 6
DINKY	Gauze compresses 50x50 100s	Fig. 7
GAUZE	Gauze Compresses 100x100 8-ply 100s	Fig. 8
LT2200	Lint-free Wipes 50x50 100s	Fig. 9
LT100	Lint-free Wipes 100x100 100s	Fig. 10
C/PADS	Cotton Pads 80s (imported - unstitched)	Fig. 11

Disposables - Salon (standard items)



Fig. 11



Fig. 12



Fig. 13



Fig. 14



Fig. 15



Fig. 16



Fig. 17



Fig. 18



Fig. 19



Fig. 20

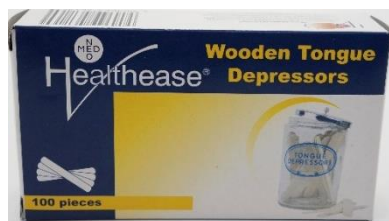


Fig. 21



Fig. 22



Fig. 23



Fig. 24



Fig. 25

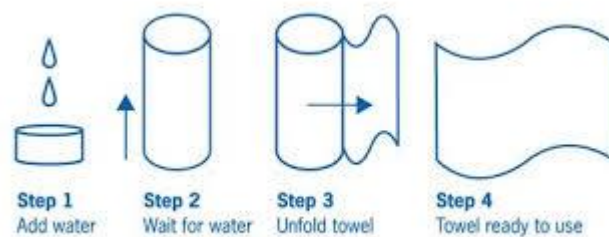


Fig. 26



Fig. 27



Fig. 28



Fig. 29



Fig. 30



Fig. 31

CODE	GRIT	Item
MINIROLL	Mini medical roll 254mm	Fig. 11
PAPERROLL	Large medical towel roll 504mm	Fig. 12
ELITE	Facial Tissues 90s	Fig. 13
ELITE-SOFT	Facial Tissues 90s (softpack)	Fig. 14
MASC/WAND	Disposable mascara wands 25s	Fig. 15
LIPBR-PCK	Disposable lip/tint brushes 25s	Fig. 16
02-PP5	Disposable lip/tint brush ea	Fig. 16
SG-ATR4710	Disposable sponge eye applicator ea	Fig. 17
N108	Sea sponge cosmetic applicator	Fig. 18
WEDGES-24	Latex-free wedges 24s	Fig. 19
SPAT	Plastic creme spatulas 5s	Fig. 20
WA100	Spatulas – body 100s	Fig. 21
WA50S	Spatulas – facial 100s	Fig. 22
WA50S-100	Spatulas – facial thin 100s imported	Fig. 23
SU0035	Blood lancets (box of 200)	Fig. 24
NAM-TOWEL	Paper towel (kitchen towel) ea	Fig. 25
YW-COMPRESS	Disposable compress towels 200	Fig. 26
BWS-50S	Body wrap sheets 1.8mX1.8m 50s	---
G-76MITT	Disposable facial mitts 12 prs/pck	Fig. 27
T-COVER	Disposable covers for facial hole 100s	Fig. 28
SHARPS	Sharps container 1L	Fig. 29
TB	Disposable thermal blanket	Fig. 30
TEACANDLES	Tea Candles	Fig. 31

Eyelash Tinting - Julienne



6001525007011 Black



6001525007028 Blue/Black



6001525007035 Brown



6001525795125 Light Brown



SSINTKIT Tint Kit: black, BI/Black, Brown, peroxide, vaseline, papers, tint brush & dish



JCBLEACH Creme Developer 50ml

Accessories



Hydrogen Peroxide 10 Vol
HP200ml, HP100ml, HP50ml



NDDG Glass
Dappen dish



60014399
Vaseline 50g



MASC/WAND Black
Mascara Wands 25s



PIPETTE
dropper cap



LIPBR-PCK Tint brush 25s
02PP5 single lip/tint brush



Eyelash Tinting - Refectocil



9003877057109
Black



9003877057208
Blue/Black



9003877057307
Brown



9003877057xxx
Light Brown



9003877057413
Chestnut



9003877057406
Red



9003877057000
Blonde Brow



F9003877057116
Graphite



9003877050223
Deep Blue



9003877057192 Tint
Protecting Papers



REFECTINTKIT :Black, BI/black, Brown, peroxide, Vaseline, papers, brush & dish



9003877057xxx
Oxidant Creme



9003877057xxx
Oxidant liquid



9003877057xxx
Tint Remover



9003877057xxx
Micellar eye
makeup remover

Refectocil Sensitive Range



9003877050216
Sensitive Black



9003877050223
Sensitive Dark Brown



F9003877050230
Sens. Med Brown
9003877050247
Sens. Light Brown



9003877050209
Sens. Developer Gel



9003877050xxx
Sens. Tint remover –
stain remover for skin



F9003877050xxx
Skin protection
cream & eye mask
intensive care



9003877050xxx
Lash & Brow Boost
2-in-1 boost effect



9003877050xxx
Long Lash – intensive
night treatment



9003877050xxx
Care Balm –
intensive night care



9003877050xxx
Saline solution –
cleanse solution pre
tint or perm



9003877050xxx
Styling Gel – color
protection for lashes
& brows



9003877050xxx
Artist Palette



WOWBROW
Brow Styling Strips –
wax strips that
ensure the perfect
shape brow. When
tinting at the same
time the strip acts as
a template

Refectocil Other



REFECLIFTKIT
Refectocil Eyelash Lift
kit makes lashes
appear longer & fuller
for 6 weeks. It 'lifts' the
lashes straight up using
a silicone flat lifting pad



9003877904120 Eyelash lift pad - large

9003877904113 Eyelash lift pad – medium

9003877904106 Eyelash lift pad - small



9003877904xxx Silicon
protecting pads



F9003877904182
Eyelash Lift/Curl
Glue



REFECPERM Lash
curling/perming kit
nourishes lashes and
curls, lasts up to 4
weeks, Can use on
most lashes thanks to 4
different roller sizes. Up
to 36 applications



9003877904xxx
Refill perm &
neutraliser tubes
18 applications



9003877904xxx
Refill curl glue
4ml



9003877904xxx
Refill rollers – 1
pouch contains
36 rollers
Available in S, M,
L, XL & XXL



9003877904xxx
Pouch with 5
rosewood sticks
ideal for curl
application

Artificial Lashes

We offer artificial lashes for various types of application.

Individual 'flare' lashes which are easier to apply as the contain a small group of approximately 3-4 lashes which can be attached to the lashes to create a fuller effect. This treatment can be effected in a relatively short time.

Single Lash application, this requires thorough training as each lash is a single hair that is expertly attached to an existing lashes, one at a time. This treatment can take a couple of hours

EESK Eyelash Starter kit 15pc (for single lash training)



Eyelash Extensions

1. Premade Volume Lashes Fans
2. Premade Volume Lashes Fans
3. Individual Eyelash Extension

Glue Accessories

4. Eyelash Adhesive (Black) 8ml
5. Lash Primer, 10ml
6. Glue Remover, 10ml

Application Tools

7. Anti-static Tweezers 12.5cm
8. Anti-static Tweezers 11.5cm
9. Jade Stone 50mm
10. Large Air Blower (Green)
11. Adhesive Rings (M) 5pcs
12. Eyelash Comb Brush (Black)
13. Disposable Micro Applicators (M) Deep Green
14. Hydrogel Eye Patches
15. Nonwoven Eye Pads 30PCS



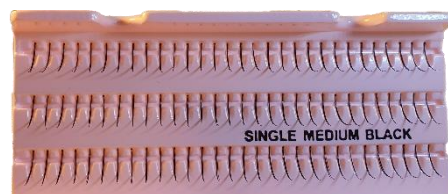
Before



After



EYEL/S/SH 1P Single Lashes short 90



EYEL/S/MED 1 P Single Lashes medium 90



LASHS-M Lashes Black Medium flares 60



**EYEL/S/MED/BULK
Eyelash extensions
single 12mm 10Curl
5000**



**SN-PP902 disposable micro
applicators M (green) 100pc/bott**



**SN-EYPR
eyelash primer**



**SN-EYAD
black eyelash
adhesive 8ml**



**SN-NEYP-30
non-woven
eyepads**



Aromatherapy Essential Oils

Please note that aromatherapy essential oils should only be used by therapists who are qualified in Aromatherapy training. It is important to have a clear knowledge and understanding of how essential oils interact and what contra-indications there could be. Use by unqualified persons could have adverse effects. Essential Oils are available in 10ml bottles.



AROB E Bergamot *Citrus Bergamia*

Possible Uses: acne, abscesses, anxiety, cold sores, cystitis, depression, itching, oily skin, psoriasis, stress, fever, anti-depressant, eczema, colds & flus.

How to use: In a base cream/lotion or gel add 20 drops per 50g. In a bath add 7 drops to bath water. In massage oil add 10 drops per 20ml. In vapourizer or burner mix 6 drops with water. In a Room spritz add 10 drops to 250ml of water.

Precautions: Discontinue if any discomfort or irritation occurs. Keep out of reach of children. For external use only. Keep away from eyes. If pregnant consult practitioner. Phototoxic. Stay out of sun after use. Do not use undiluted.



AROCA Chamomile Roman Blend *Chamaemelum Nobile*

Possible Uses: PMS, abdominal pain. Gall bladder, throat infections, allergies, hay fever, asthma, acne, eczema, rashes, wounds, dermatitis, dry & itchy skin, calming, digestion, abscesses, cystitis, arthritis. Insomnia, nausea, insect bites, stress, sprains, headache, earache, sunburn, inflammation.

How to use: In a base cream/lotion or gel add 20 drops per 50g. In a bath add 7 drops to bath water. In massage oil add 10 drops per 20ml. In vapourizer or burner mix 6 drops with water. In a Room spritz add 10 drops to 250ml of water. On an earbud (for insect bites) 1-2 drops. As a Gargle 8-10 drops per 250ml glass of water. On a compress, 4 drops per 250ml water

Precautions: Discontinue if any discomfort or irritation occurs. Keep out of reach of children. For external use only. Keep away from eyes. Avoid during pregnancy. Do not use undiluted.



AROCIT Citronella *Cymbopogon Nardus*

Possible Uses: Deodorant, tired feet, headache, insect repellent, training tool for pets, oily skin.

How to use: In a base cream/lotion or gel add 20 drops per 50g. In vapourizer or burner mix 6 drops with water. As a Training tool for pets add 10 drops to a 250ml bottle of water (spray area where you do not want pets to soil - as a *deterrent*). On a cotton ball (as insect repellent) 2-3 drops.

Precautions: Discontinue if any discomfort or irritation occurs. Keep out of reach of children. For external use only. Keep away from eyes. If pregnant consult practitioner. May irritate sensitive skin and cause dermatitis. Do not use undiluted.



AROEU Eucalyptus *Eucalyptus Globulus*

Possible Uses: Sinusitis/frequent sneezing/hayfever, skin infections, ulcers, sores, wounds, skin eruptions, insect bites, antiseptic, sore throats, coughs, colds & flus, anti-inflammatory, muscular pains, rheumatism.

How to use: In a base cream/lotion or gel add 20 drops per 50g. In a bath add 7 drops to bath water. In massage oil add 10 drops per 20ml. In vapourizer or burner mix 6 drops with water. In a Room spritz add 10 drops to 250ml of water. On an earbud (for insect bites) 1-2 drops. Gargle – 8-10 drops per 250ml water.

Precautions: Discontinue if any discomfort or irritation occurs. Keep out of reach of children. For external use only. Keep away from eyes. If pregnant consult practitioner. Do not use in cases of high blood pressure or epilepsy. Do not use undiluted.



AROGA Grapefruit White *Citrus Paradisi*

Possible Uses: Obesity. Kidney & liver problems, depression, colds & flus, muscle fatigue, stiffness, toxin buildup, acne, toning the skin & tissues, promotes hair growth.

How to use: In a base cream/lotion or gel add 20 drops per 50g. In a bath add 7 drops to bath water. In massage oil add 10 drops per 20ml. In vapourizer or burner mix 6 drops with water. In a Room spritz add 10 drops to 250ml of water. In a shampoo add 20 drops per 100ml shampoo. On a compress - 4 drops per 250ml water.

Precautions: Discontinue if any discomfort or irritation occurs. Keep out of reach of children. For external use only. Keep away from eyes. If pregnant consult practitioner. Can irritate skin if exposed to strong sunlight after treatment. Do not use undiluted.



AROG E Geranium *Pelagomium Carteri*

Possible Uses: Eczema, bleeding, kidney stones, stress, PMS, anxiety, tension, fluid retention, cellulite, bruises, insect repellent, ringworm, head lice, wounds, burns, depression.

How to use: In a base cream/lotion or gel add 20 drops per 50g. In a bath add 7 drops to bath water. In massage oil add 10 drops per 20ml. In vapourizer or burner mix 6 drops with water. In a Room spritz add 10 drops to 250ml of water. On a compress (for insect repellent) 2-3 drops. On a compress – 4 drops per 250ml water.

Precautions: Discontinue if any discomfort or irritation occurs. Keep out of reach of children. For external use only. Keep away from eyes. Do not use if pregnant. Do not use undiluted.



AROJA Jasmine blend *Jasminum Officinale*

Possible Uses: Eczema, bleeding, kidney stones, stress, PMS, anxiety, tension, fluid retention, cellulite, bruises, insect repellent, ringworm, head lice, wounds, burns, depression.

How to use: In a base cream/lotion or gel add 20 drops per 50g. In a bath add 7 drops to bath water. In massage oil add 10 drops per 20ml. In vapourizer or burner mix 6 drops with water. In a Room spritz add 10 drops to 250ml of water. On cotton ball (as insect repellent) 2-3 drops. On a compress – 4 drops per 250ml water.

Precautions: Discontinue if any discomfort or irritation occurs. Keep out of reach of children. For external use only. Keep away from eyes. Do not use if pregnant. Do not use undiluted.



AROLA Lavender *Lavandula Angustifolia*

Possible Uses: Burns, inflammation, wounds, eczema, dermatitis, acne, asthma, insect repellent, anxiety, rheumatism, sprains, stress, stretch marks, headache, migraines, depression, earache, itching, nausea, sunburn, lice, insect bites

How to use: In a base cream/lotion or gel add 20 drops per 50g. In a bath add 7 drops to bath water. In massage oil add 10 drops per 20ml. In vapourizer or burner mix 6 drops with water. In a Room spritz add 10 drops to 250ml of water. On a cotton ball (as insect repellent) 2-3 drops. On an earbud (insect bites) 1-2 drops. On a compress – 4 drops per 250ml water.

Precautions: Discontinue if any discomfort or irritation occurs. Keep out of reach of children. For external use only. Keep away from eyes. If pregnant consult practitioner. Do not use undiluted.



AROLE Lemongrass *Cymbopogon Citratus*

Possible Uses: Acne, athlete foot, perspiration, flatulence, insect repellent, muscle aches, stress, oily skin, headache, sore throat, laryngitis, fever, cellulite, toning the skin and tissues, infections, indigestion.

How to use: In a base cream/lotion or gel add 20 drops per 50g. In a bath add 7 drops to bath water. In massage oil add 10 drops per 20ml. In vapourizer or burner mix 6 drops with water. In a Room spritz add 10 drops to 250ml of water. On a cotton ball (as insect repellent) 2-3 drops. Gargle - 8-10 drops in 250ml water. On a compress – 4 drops per 250ml water.

Precautions: Discontinue if any discomfort or irritation occurs. Keep out of reach of children. For external use only. Keep away from eyes. Avoid during pregnancy. Do not use undiluted.



AROLEM Lemon Verbena *Lippia Citriodora*

Possible Uses: Sore throat, nervous tension, cellulite, constipation, acne, rheumatism, arthritis, cold sores, mouth ulcers, insect bites, headaches, migraines, depression, stress, cuts, minor wounds, stiff limbs, exhaustion.

How to use: In a base cream/lotion or gel add 20 drops per 50g. In a bath add 7 drops to bath water. In massage oil add 10 drops per 20ml. In vapourizer or burner mix 6 drops with water. In a Room spritz add 10 drops to 250ml of water. Gargle – 8-10 drops per 250ml water. On an earbud (insect bites) 1-2 drops. On a compress – 4 drops per 250ml water.

Precautions: Discontinue if any discomfort or irritation occurs. Keep out of reach of children. For external use only. Keep away from eyes. If pregnant consult practitioner. Photo-toxic, do not use before exposure to sun, Do not use undiluted.



AROLIM Lime *Citrus Aurantifolia*

Possible Uses: Sinusitis/frequent sneezing/hay fever, asthma, bronchitis, coughs, sore throat, colds & flus, depression, immune booster, anxiety, arthritis, rheumatism, poor circulation, cellulite, muscle aches, insect bites, wounds & cuts, oily skin, acne, fever..

How to use: In a base cream/lotion or gel add 20 drops per 50g. In a bath add 7 drops to bath water. In massage oil add 10 drops per 20ml. In vapourizer or burner mix 6 drops with water. In a Room spritz add 10 drops to 250ml of water. On an earbud (for insect bites) 1-2 drops. On a compress – 4 drops per 250ml water. Gargle – 4 drops per 250ml water

Precautions: Discontinue if any discomfort or irritation occurs. Keep out of reach of children. For external use only. Keep away from eyes. Avoid during pregnancy. Do not use undiluted.



AROMAN Mandarin *Citrus Reticulata*

Possible Uses: Insomnia, liver problems, anxiety, asthma, circulation, digestive system, stretch marks, reduces fluid retention, stress, acne, oily skin, scars.

How to use: In a base cream/lotion or gel add 20 drops per 50g. In a bath add 7 drops to bath water. In massage oil add 10 drops per 20ml. In vapourizer or burner mix 6 drops with water. In a Room spritz add 10 drops to 250ml of water. On a compress – 4 drops per 250ml water.

Precautions: Discontinue if any discomfort or irritation occurs. Keep out of reach of children. For external use only. Keep away from eyes. Avoid during pregnancy. Can cause photosensitivity. Do not use undiluted.



ARONE Neroli *Citrus Vulgaris*

Possible Uses: Depression, anxiety, cardiac tonic, heart palpitations, diarrhoea, stress, insomnia, sedative, headaches, scar tissue, stretch marks, broken capillaries, rejuvenates skin, skin elasticity, eczema, dry skin, sensitive skin, exhaustion.

How to use: In a base cream/lotion or gel add 20 drops per 50g. In a bath add 7 drops to bath water. In massage oil add 10 drops per 20ml. In vapourizer or burner mix 6 drops with water. In a Room spritz add 10 drops to 250ml of water. On a compress – 4 drops per 250ml water.

Precautions: Discontinue if any discomfort or irritation occurs. Keep out of reach of children. For external use only. Keep away from eyes. If pregnant consult practitioner. Do not use undiluted.



AROOS Orange Sweet *Citrus Sinensis*

Possible Uses: Colds & flus, immune system, eliminates toxins from the body, water retention, constipation, puffiness, stress, nervous tension, depression, anxiety, sedative, congested skin, oily skin, blemishes, toning, exhaustion.

How to use: In a base cream/lotion or gel add 20 drops per 50g. In a bath add 7 drops to bath water. In massage oil add 10 drops per 20ml. In vapourizer or burner mix 6 drops with water. In a Room spritz add 10 drops to 250ml of water. On a compress – 4 drops per 250ml water.

Precautions: Discontinue if any discomfort or irritation occurs. Keep out of reach of children. For external use only. Keep away from eyes. If pregnant consult practitioner. Photo-toxic, do not use prior to sun exposure. Do not use undiluted.



AROEPE Peppermint *Mentha Piperita*

Possible Uses: Nausea, indigestion, fever, migraines, toothache, bronchitis, pneumonia, asthma, dry coughs, sinus congestion, aching feet, rheumatism, muscular aches, liver problems, depression, stress, itching, skin redness, dermatitis, ringworm, acne, sunburn.

How to use: In a base cream/lotion or gel add 20 drops per 50g. In a bath add 7 drops to bath water. In massage oil add 10 drops per 20ml. In vapourizer or burner mix 6 drops with water. In a Room spritz add 10 drops to 250ml of water. On a compress – 4 drops per 250ml water.

Precautions: Discontinue if any discomfort or irritation occurs. Keep out of reach of children. For external use only. Keep away from eyes. Avoid during pregnancy. Do not use undiluted.



ARORO Rose Blend *Rosa Damascena*

Possible Uses: Anxiety, depression, stress, tension, circulatory problems, liver congestion, nausea, antiseptic, coughs, hay fever, asthma, eczema, skin redness, scarring, sensitive skin, swelling, spasm.

How to use: In a base cream/lotion or gel add 20 drops per 50g. In a bath add 7 drops to bath water. In massage oil add 10 drops per 20ml. In vapourizer or burner mix 6 drops with water. In a Room spritz add 10 drops to 250ml of water. On a compress – 4 drops per 250ml water.

Precautions: Discontinue if any discomfort or irritation occurs. Keep out of reach of children. For external use only. Keep away from eyes. Avoid during pregnancy. Do not use undiluted.



AROTT Tea Tree *Melaleuca Alternifolia*

Possible Uses: fungal infections, viral infections, bacterial infections, cold sores, acne, burns, flus, asthma, coughs, sinusitis, oily skin, blemishes, dandruff, psoriasis, rashes, soreness.

How to use: In a base cream/lotion or gel add 20 drops per 50g. In a bath add 7 drops to bath water. In massage oil add 10 drops per 20ml. In vapourizer or burner mix 6 drops with water. In a Room spritz add 10 drops to 250ml of water. In a shampoo 20 drops per 100ml shampoo. On a compress – 4 drops per 250ml water.

Precautions: Discontinue if any discomfort or irritation occurs. Keep out of reach of children. For external use only. Keep away from eyes. Consult practitioner during pregnancy. Do not use near open wounds. Do not use undiluted.



ARORS Rosemary *Rosmarinus Officinalis*

Possible Uses: gout, fatigues, skin infections, dandruff, headaches, migraines, exhaustion, antiseptic, rheumatism, arthritis, muscle aches, poor circulation, varicose veins, water retention, cellulite, asthma, bronchitis, sinus, coughs, hair growth, eczema, dermatitis.

How to use: In a base cream/lotion or gel add 20 drops per 50g. In a bath add 7 drops to bath water. In massage oil add 10 drops per 20ml. In vapourizer or burner mix 6 drops with water. In a Room spritz add 10 drops to 250ml of water. In a shampoo add 20 drops per 100ml of shampoo. On a compress – 4 drops per 250ml water.

Precautions: Discontinue if any discomfort or irritation occurs. Keep out of reach of children. For external use only. Keep away from eyes. Avoid during pregnancy. Do not use undiluted.



AROYL Ylang Ylang *Cananga Odorata*

Possible Uses: palpitations, anxiety, depression, panic, high blood pressure, sedative, aphrodisiac, hair growth, insomnia, toning the skin & tissues.

How to use: In a base cream/lotion or gel add 20 drops per 50g. In a bath add 7 drops to bath water. In massage oil add 10 drops per 20ml. In vapourizer or burner mix 6 drops with water. In a shampoo 20 drops per 100ml shampoo. On a compress – 4 drops per 250ml water.

Precautions: Discontinue if any discomfort or irritation occurs. Keep out of reach of children. For external use only. Keep away from eyes. Consult practitioner during pregnancy. Do not use excessively. Do not use undiluted.



AROSA Sandalwood *Santalum Album*

Possible Uses: acne, fungal infections, bacterial infections, skin infections, itching, eczema, inflammation, anti-ageing, sedative, tension, depression, anxiety, exhaustions, sore throat, dry coughs, bronchitis, asthma, insect repellent.

How to use: In a base cream/lotion or gel add 20 drops per 50g. In a bath add 7 drops to bath water. In massage oil add 10 drops per 20ml. In vapourizer or burner mix 6 drops with water. In a Room spritz add 10 drops to 250ml of water. On a cotton ball (as insect repellent) 2-3 drops. On a compress – 4 drops per 250ml water.

Precautions: Discontinue if any discomfort or irritation occurs. Keep out of reach of children. For external use only. Keep away from eyes. Consult practitioner during pregnancy. Do not use undiluted.



Available in 1 litres and 5 litres

Sweet Almond Oil: contains essential fatty acids and vitamins A, B1, B2, B6 and E. A great emollient that penetrates the skin easily. Possible uses: Dryness, itchy or inflamed skin.

Precautions: Discontinue if any discomfort or irritation occurs. Keep away from eyes. Keep out of reach of children. External use only. Flammable. Store in a cool, dry place. Do not use if allergic to nuts.

Grapeseed Oil: is lightweight & rich in vitamins, minerals, linoleic acid and other essential fatty acids. A great emollient that penetrates the skin easily

Precautions: Discontinue if any discomfort or irritation occurs. Keep away from eyes. Keep out of reach of children. External use only. Flammable. Not recommended for facial use. Store in a cool, dry place.

Masseur Art Oil: a unique massage oil that originates from grapeseed oil however it is water soluble. This makes keeping your towels looking and smelling fresh an easy task.



AROSP Spearmint *Mentha Spicata*

Possible Uses: fungal infections, viral infections, bacterial infections, cold sores, acne, burns, flus, asthma, coughs, sinusitis, oily skin, blemishes, dandruff, psoriasis, rashes, soreness.

How to use: In a base cream/lotion or gel add 20 drops per 50g. In a bath add 7 drops to bath water. In massage oil add 10 drops per 20ml. In vapourizer or burner mix 6 drops with water. In a Room spritz add 10 drops to 250ml of water. In a shampoo 20 drops per 100ml shampoo. On a compress – 4 drops per 250ml water.

Precautions: Discontinue if any discomfort or irritation occurs. Keep out of reach of children. For external use only. Keep away from eyes. Avoid during pregnancy. Do not use undiluted.

Soy Candles

These soy candles made from 93% soy and 7% essential oils make massage easy and cost-effective. The candle is lit and the warm 'wax' is poured into your hands and used as a massage medium. They are great for Professional or retail use. The fragrance from the essential oils make these candles a welcoming decoration in your house or Salon.



SOY-BALANCE

Soothe & Balance/Repair

Vanilla which has a comforting scent for relaxation. It can relieve PMS symptoms, fight infections, boost libido, lower blood pressure, reduce inflammation, and reduce depression.

Ylang Ylang which can reduce anxiety & depression, ease panic, reduce high blood pressure, act as a sedative assisting with insomnia. It can tone the skin & tissues and is also an aphrodisiac.



SOY-CALMING

Calming & Soothing

Lemongrass which aids with muscle aches & pains is used to alleviate stress. It tones the skin and tissues and assist with alleviating cellulite.

Ginger reduces inflammation and soothes aches and pains. It can facilitate the elimination of toxins and aids digestion which eases discomforts of the stomach and bowel



SOY-LIFTING

Lifting & Balancing

Rose: Alleviates stress, Anxiety & tension. It also assists with circulatory problems, liver congestion and nausea.

Geranium : is used to alleviate stress, anxiety and tension. It also alleviates PMS, fluid retention and cellulite,.



SOY-TART&SPICY

Tart & Spicy

Grapefruit: can treat depression, muscular aches & pains, fatigues and stiffenr. It also aids with the treatment of obesity, Kidney & liver problems, and toxin buildup, It tones the skin & tissues.

Cinnamon: is a natural and is said to stimulate circulation, reduce stress and relieve pain. It can help fight off infections, improve digestion, and protect against insects.

Hot Stones



BASALT-40PC

40 piece basalt hot stone set:

2 x XL stones (11x7x30)

12 x L stones (7.5x5.5x2.75)

18 x M stones (6.5x4.5x1.75)

8 x SM stones (4x3.2x1.8)

Stone therapy is not only a relaxing experience, it also increases blood circulation & metabolism. It can decrease tension and tissue stiffness.



MARBLE-14PC

14 piece marble stone set

Incorporating cold marble stones into your hot stone massage 'completes' the balance to your massage. Cold marble stones cause an increase in muscle tone and a decrease of inflammation, thereby interrupting the pain/spasm cycle & alleviating pain. Cold can also assist with ridding the muscles & tissues of fluid and wastes.



CHAKRA

This 7-piece Chakra stone set for those trained in the use of Chakra stones. Incorporating these into your massage to balance the *chi* or energy of your client can offer a unique treatment

Waxing Systems



Epilation Zone professional waxing solutions

Epilation Zone or better known as **Waxing Systems** in South Africa are uniquely formulated, fully imported high grade waxes that offer the best solutions to waxing. Based on European formulations this wax is exported to many countries, Europe, Russia, USA and Brazil (being one of the largest importers). Each country that imports the wax has the licence to label it under their own brand, this makes it affordable and economical. Most importantly it can be used on all skin types with very little or no discomfort thanks to the low melting temperatures and unique formulations. **Waxing Systems** has a range of variants to suit your needs.

REWARDS SYSTEM



On every **Waxing Systems** wax you will find a colour coded sticker, collect 10 of the same colour stickers and exchange for 1 of the same wax free. Or continue collecting your stickers to exchange for a wax heater or other Depilatory products. Ask your sales consultant for a card to attach your stickers to and save. T&C apply.



Yellow: Cartridges 100g

Green: Strip Wax 800g



Orange: Hot/Film Wax Bans 1kg

Blue: Paraffin Wax 1kg



Waxing Systems Strip Wax, often called Cold Wax, is extremely efficient in removing hair with depilation strips. It is applied extremely thinly to the skin in the same direction of the hair. The strip is then firmly pressed against the wax in a few firm strokes. The strip is then removed against the direction of hair growth. It can remove even the shortest of hairs effectively. **Waxing Systems Strip wax** also has a benefit of being less sticky which allows it to adhere more to the hair itself than the skin, this alleviates the discomfort associated with waxing. All waxes contain coconut oil for moisturization. Available in 100g cartridges and 800g tins.



Hard Wax Beans ROSE

Waxing Systems Hot Wax is a method more suitable to those stubborn areas eg bikini, underarm and facial. A thin layer (approximately 2mm) of hot wax is applied against the hair (opposite direction) to 'catch & lift' the hair. Once cooled slightly the wax is then removed in the same direction as the hair growth. This minimises 'breaking' of the hair and is less painful. **Waxing Systems hot wax** is packed in 1kg bags of 'beans' which allow for easy melting and readiness.

Waxing Systems Film Wax is a new generation wax, sometimes called 'elastic' wax or 'chewing gum' wax. Film wax is very similar in application to **Waxing Systems Hot wax** but allows for an even thinner application (approximately 1-2 mm). It is very economical and easy to melt. All **Waxing Systems Hot & Film Wax** contain moisturising coconut oil



Waxing Systems Paraffin Wax is available in 1kg bags of different variants, suitable for all types of applications.

EZ Strip Wax Cartridges 100g



EZ-CART-ALOE

ALOE VERA

Great for sensitive skins
Aloe Barbadensis Leaf Extract provides soothing relief to the skin and is a powerful anti-inflammatory.
 Titanium Dioxide prevents irritation to skin, allowing minimal risk to sensitive skins
 Chrome oxide a natural mineral pigment
 Regenerating & moisturising



EZ-CART-AZULENE

AZULENE

Suitable for sensitive skins
 Great for students or 1st time users
 Azulene flavour
 Hydrated Chrome Oxide is a natural mineral pigment



EZ-CART-BANANA

BANANA

Suitable for dry & mature skins
 Lower operating temperature of a creme
 Banana flavour
 Titanium Dioxide prevents irritation to skin, allowing minimal risk to sensitive skins



EZ-CART-CHOC

DARK CHOCOLATE

Ideal for sensitive skins
Theobroma Cacao Seed butter protects & repairs, is anti-inflammatory & soothing with less irritation and redness
 Titanium Dioxide prevents irritation to skin, allowing minimal risk to sensitive skins
 Iron Oxides are gentle & non-toxic & will not irritate the skin.

Ideal wax for Men and clients with coarse hair



EZ-CART-CREME

WHITE CHOCOLATE

- Assists in removal of fine, soft hairs often Missed by clear waxes
- Lower operating temperature of cremes
- Suitable for all skin types especially fair-Skinned persons
- Titanium Dioxide prevents irritation



EZ-CART-GREEN

GREEN TEA

Camellia Sinensis Leaf Oil (Green Tea) is an anti-oxidant & is skin conditioning & soothing
 Titanium Dioxide prevents irritation to skin, allowing minimal risk to sensitive skins. It is gentle & lubricating ideal for redness-prone skins & clients
 Chrome oxide a natural mineral pigment
 Regenerating & moisturising



EZ-CART-LEMON

EZ-CART-LEM-SM (facial roller)

LEMON

Citrus Medica Limonum Peel oil is cleansing
 Lemon oil is uplifting
 Titanium Dioxide prevents irritation to skin, allowing minimal risk to sensitive skins. It is gentle & lubricating ideal for redness-prone skins & clients
 Lower operating temperature of cremes



EZ-CART-OLIVE

OLIVE

Olive Oil that has soothing & nourishing benefits to skin
 Effectively grips short & stubborn hairs
 Olive Extract reduces inflammation and fights skin infections
 Hydrated Chrome Oxide is a natural mineral pigment



EZ-CART-SENS

ROSE /PINK SENSITIVE

Ideal for sensitive skins
 Titanium Dioxide prevents irritation to skin, allowing minimal risk to sensitive skins. It is gentle & lubricating ideal for redness-prone skins & clients
 Lower operating temperature of cremes



EZ-CART-WARM

HONEY / WARM

Suitable for all skin types
 Slightly stickier thereby suiting 1st time users

EZ Strip Wax tins 800g

EZ-WAX-ALOE

ALOE

Great for sensitive skins
Aloe Barbadensis Leaf Extract provides soothing relief to the skin and is a powerful ant-inflammatory.
 Titanium Dioxide prevents irritation to skin, allowing minimal risk to sensitive skins. Regenerating & Moisturising.
 Chrome oxide a natural mineral pigment

EZ-WAX-AZULENE

AZULENE

Suitable for sensitive skins
 Azulene flavour
 Hydrated Chrome Oxide is a natural mineral pigment
 Great for students or 1st time users

EZ-WAX-CREME

WHITE CHOCOLATE

Assists in removal of fine, soft hairs
 Lower operating temperature
 Suitable for all skin types
 Titanium Dioxide prevents irritation to skin, allowing minimal risk to sensitive skins.

EZ-WAX-LEMON

LEMON

Lemon oil is uplifting
Citrus Medica Limonum Peel oil is cleansing and Lemon oil is uplifting
 Titanium Dioxide prevents irritation to skin, allowing minimal risk to sensitive skins. It is gentle & lubricating ideal for redness-prone skins & clients
 Lower operating temperature

EZ-WAX-WARM

HONEY / WARM

Suitable for all skin types
 Slightly stickier thereby suiting 1st time users

EZ Hot Wax Beans 1kg

EZ-FILMBEAN-RED

RED FILM

Applies very thinly
 Soft & pliable
 Contains **Beeswax**

EZ-HOTBEAN-AZ

AZULENE

Contains **Beeswax**
 Camphor soothes inflammation & redness & has antibacterial & antifungal properties
 The gentle benefits of *Guaiazulene*, (a Chamomile plant extract) alleviates redness & swelling

EZ-HOTBEAN-CHOC

CHOCOLATE

Contains **Beeswax**
 Titanium Dioxide prevents irritation to skin, allowing minimal risk to sensitive skins.
Theobroma Cacao Seed butter protects & repairs, is anti-inflammatory & soothing with less irritation and redness
 Iron Oxides are gentle & non-toxic & will not irritate the skin. Ideal for sensitive areas & Brazilian Wax

EZ-HOTBEAN-LAV

LAVENDER

Calming properties of *Lavandula Angustifolia* reduces redness & blotches, is an anti-inflammatory that soothes & heals reddened skin.
 Titanium Dioxide prevents irritation to skin, minimal risk to sensitive skins

EZ-HOTBEAN-RS

ROSE

Titanium Dioxide prevents irritation to skin, allowing minimal risk to sensitive skins. It is gentle & lubricating ideal for redness-prone skins & clients
 .Excellent for sensitive areas and perfect for Brazilian Waxing

EZ-HOTBEAN-WA

HONEY / WARM

Contains **Beeswax**
 Suitable for all skin types

EZ Paraffin Wax 1kg



EZ-PARA-JASMINE

JASMINE

Paraffin treatments create an invisible barrier on your skin helping it to retain the oils that your body naturally produces. It is effective in soothing and softening the skin and especially helpful healing dry, cracked skin on the heels. The warmth of the treatment is also very therapeutic for arthritis and rheumatism sufferers



EZ-PARA-LEMON

LEMON

Paraffin treatments create an invisible barrier on your skin helping it to retain the oils that your body naturally produces. It is effective in soothing and softening the skin and especially helpful healing dry, cracked skin on the heels. The warmth of the treatment is also very therapeutic for arthritis and rheumatism sufferers



EZ-PARA-PEACH

PEACH

Paraffin treatments create an invisible barrier on your skin helping it to retain the oils that your body naturally produces. It is effective in soothing and softening the skin and especially helpful healing dry, cracked skin on the heels. The warmth of the treatment is also very therapeutic for arthritis and rheumatism sufferers



EZ-PARA-STRAWB

STRAWBERRY

Paraffin treatments create an invisible barrier on your skin helping it to retain the oils that your body naturally produces. It is effective in soothing and softening the skin and especially helpful healing dry, cracked skin on the heels. The warmth of the treatment is also very therapeutic for arthritis and rheumatism sufferers



EZ-PARA-VANILLA

VANILLA

Paraffin treatments create an invisible barrier on your skin helping it to retain the oils that your body naturally produces. It is effective in soothing and softening the skin and especially helpful healing dry, cracked skin on the heels. The warmth of the treatment is also very therapeutic for arthritis and rheumatism sufferers

EZ Waxing Accessories



EZ-AWCG EZ-AWCG-LT After Wax Cooling Gel

A soothing cooling gel that contains Aloe Vera for its anti-oxidant properties and ability to heal burns. Use as an after-wax treatment for soothing relief. Available in a 250ml pump dispenser and a 1 litre Refill bottle



EZ-PWC EZ-PWC-LT Post Wax Lotion

A soothing moisturising cream that contains Rose for an excellent emollient of dry skin as well as anti-inflammatory properties. Use as an after-wax treatment for calming relief. Available in a 250ml pump dispenser and a 1 litre Refill bottle



EZ-PWO EZ-PWO-LT Post Wax Oil

A rich moisturising oil that contains Rose for an excellent emollient of dry skin as well as anti-inflammatory properties. Use as an after-wax treatment for smooth supple skin. Available in a 250ml spray dispenser and a 1 litre Refill bottle



EZ-PWL EZ-PWL-LT Pre Wax Lotion

A hygienic cleansing lotion that contains Tea Tree for its sanitising and antiseptic qualities without drying out the skin. Use as a pre-wax treatment for cleansing and preparing skin for waxing. Available in a 250ml spray dispenser and a 1 litre Refill bottle

EZ Accessories



IT-WAXROLL

100m Depilatory Roll

- 100gsm thickness
- Helps prevent wax penetrating through the strip
- Cost-effective
- Durable
- Size: 7.6cm * 100m



IT-WAXSTRIP

100 Depilatory Strips

- 100gsm thickness
- Helps prevent wax penetrating through the strip
- Cost-effective
- Durable
- Pre-cut for your convenience
- Size: 7.6 * 23cm



EZ-COLLAR

Protective Wax Collars 50s

To prevent wax build-up in your heater that could lead to faults and possibly fire-risk.

To use: Slip your wax in into the collar and pull collar up to the top of the tin. Then place wax tin into the heater. Change regularly.



EZ-TIN1 800g

EZ-TIN 500g

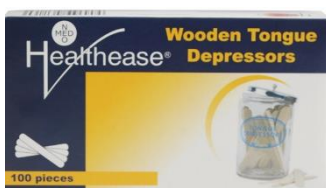
Empty tins (no lids)



EZ-PWS-L (137x165)

EZ-PWS-SM (68x140)

Plastic wax sheets to protect your massage couch, very durable and easy to clean

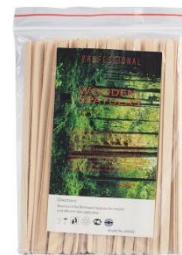


WA100 Wooden Spatulas (body) Box of \pm 100



WA50S

Facial Spatulas (local)



WA50S-100

Facial Spatulas (imported)

Exfoliation



BCS-SP

Body Exfoliating Sponge

To remove the dead skin off your body prior to waxing, assists in preventing ingrown hairs and is great for circulation.



M-G80

Nylon Exfoliating Gloves

For those who prefer a more gentle exfoliation these pairs of exfoliating gloves are an excellent choice.



SS870

Ingrozero Ingrown Hair Serum each

Manufactured by Salon Specifics

A revolutionary solution to problematic ingrown hairs. This formula has been clinically proven & contains key ingredients effective in both the treatment & prevention of ingrown hairs



SS865

Ingrozero (carton 12 pc)

Ingredients:

Anasensyl for relief & calm

Salicylic Acid for exfoliation

Triclosan as antibacterial

Glycerine to reduce dryness



SK-ING

Ingrown Hair Serum

Manufactured by Skin Science

EZ Waxing Kits

We offer a variety of different waxing kits to suit any Salons needs. Waxing kits offer a cost-effective solution for students or Salon start-ups. All EZ kits are packaged in a Pro Quip travel bag for your convenience



EZ695 Single Waxing Kit



Consists of:

- | | |
|-----------------------------|-----------------------------|
| 1 x 800g Wax Heater | 1 x Pre wax Lotion 250ml |
| 1 x 800g EZ strip wax | 1 x Post wax Creme 250ml |
| 1 x kg EZ Hot wax | 1 x Post wax Rose Oil 250ml |
| 1 x pck Pre-cut strips | 1 x talcum powder 50g |
| 1 x pck spatulas 50s | 1 x pck g-strings 10s |
| 1 x pck facial spatulas 50s | 1 x tweezers |
| 1 x Citric cleaner 250ml | 1 x plastic wax sheet SM |
| 1 x pck Wax collars 20s | 1 x PVC kitbag |

EZ795 Double Waxing Kit



Consists of:

- | | |
|-----------------------------|-----------------------------|
| 1 x 800g/500g Wax Heater | 1 x Pre wax Lotion 250ml |
| 1 x 800g EZ strip wax | 1 x Post wax Creme 250ml |
| 1 x kg EZ Hot wax | 1 x Post wax Rose Oil 250ml |
| 1 x pck Pre-cut strips | 1 x talcum powder 50g |
| 1 x pck spatulas 50s | 1 x pck g-strings 10s |
| 1 x pck facial spatulas 50s | 1 x tweezers |
| 1 x Citric cleaner 250ml | 1 x plastic wax sheet SM |
| 1 x pck Wax collars 20s | 1 x PVC kitbag |

EZ895 Super Waxing Kit



Consists of:

- | | |
|-----------------------------|-----------------------------|
| 1 x 800g Wax Heater | 1 x Citric cleaner 250ml |
| 1 x single cartridge heater | 1 x Pre wax Lotion 250ml |
| 1 x 800g EZ strip wax | 1 x Post wax Creme 250ml |
| 1 x kg EZ Hot wax | 1 x Post wax Rose Oil 250ml |
| 2 x EZ cartridges 100g | 1 x talcum powder 50g |
| 1 x pck Pre-cut strips | 1 x pck g-strings 10s |
| 1 x pck spatulas 50s | 1 x tweezers |
| 1 x pck facial spatulas 50s | 1 x plastic wax sheet SM |
| 1 x pck Wax collars 20s | 1 x PVC kitbag |

EZ995 Deluxe Duo Waxing Kit



Consists of:

- | | |
|-----------------------------|-----------------------------|
| 1 x 800g Wax Heater | 1 x Citric cleaner 250ml |
| 1 x 500g Wax Heater | 1 x Pre wax Lotion 250ml |
| 1 x 800g EZ strip wax | 1 x Post wax Creme 250ml |
| 1 x kg EZ Hot wax | 1 x Post wax Rose Oil 250ml |
| 2 x EZ cartridges 100g | 1 x talcum powder 50g |
| 1 x pck Pre-cut strips | 1 x pck g-strings 10s |
| 1 x pck spatulas 50s | 1 x tweezers |
| 1 x pck facial spatulas 50s | 1 x plastic wax sheet SM |
| 1 x pck Wax collars 20s | 1 x PVC kitbag |

PQ-PHBKIT Paraffin Kit



Consists of:

- | | |
|----------------------------|------------------------------------|
| 1 x 4kg Paraffin Heater | 1 x Derma Spray 250ml |
| 2 x kg EZ paraffin wax | 1 x Collagen & Elastin Creme 250ml |
| 1 x pair towelling booties | 1 x pck plastic protectors 50s |
| 1 x pair towelling mittens | |

Waxing Equipment



PQWH
Single Roller Unit

For 100g roller cartridge



PQRU-S
Single Roller unit with base

On/Off switch on base
Clear window to view wax
Can join 2-3 units together using
one power source
Telescopic base



PQ-4CART
4 cartridge Heater

Can hold up to 4 100 cartridges
Adjustable Temperature control
Wax melts evenly & effectively
Easy clean smooth outer casing
Ideal for Salons with more than
One therapist as it alleviates the
Necessity for multiple cartridge
Heaters in each room



PQWH
800g Wax Heater

Variable temperature settings
Drip tray/spatula rest
Removeable wax container inner
for hot wax
On/Off switch



PQW500

500g Wax Heater variable temperature settings
Removeable wax container inner for hot wax
Handle to lift hot wax tins



Y-DBLPOT

Double Wax Heater 800g / 500g

800g Wax Heater + 500g Wax Heater
Each has its individual variable temperature control
On/ Off switch 350W/220V
ABS plastic Transarent ABS lid



PQ-800G/CART

800G Wax Heater cw 3 Cartridge Heater

Can heat up 1 x 800g tin of wax + 3 x 100g cartridges
Simultaneously.
Individual On/Off switches for cartrisge heaters
Variable temperature control for 800g wax heater
Cartridge holder/sleeve ABS plastic



PQ-PHB

Paraffin Wax Heater 4kg annual temperature setting
Variable temperature control
4 litre capacity

Salon Specifics Waxes



SS369

Lemongrass 100g

Lemongrass scented
Contains soothing & nourishing olive oil
Removes short hair
Transparent wax
Suitable for all skin types



SS808

Honey 100g

Transparent & odourless wax
Contains soothing & nourishing olive oil
Suitable for all skin types



SS809

Azulene 100g

Transparent & odourless wax
Contains soothing & nourishing olive oil
Suitable for all skin types



SS314

Classic Honey 800g

Transparent & odourless wax
Contains soothing & nourishing olive oil
Suitable for all skin types



SS316

Azulene 800g

Transparent & odourless wax
Contains soothing & nourishing olive oil
Suitable for all skin types



SS843

Lemongrass 800g

Lemongrass scented
Contains soothing & nourishing olive oil
Removes short hair
Transparent wax
Suitable for all skin types



MG200

Antique Rose Hot Wax 1kg

Block form – 9 blocks
Suitable for all skin types
Creamy based formula
Contains **Beeswax**
Contains Titanium Dioxide & Azulene



SS084

Geranium Film Wax 1kg

Block form – 9 blocks
Suitable for all skin types
Soft & pliable
Contains **Beeswax**
Contains Titanium Dioxide & Azulene



SS848

Classic Honey Hot Wax 1kg

Block form – 9 blocks
Suitable for all skin types
Creamy based formula
Contains **Beeswax**
Contains Titanium Dioxide & Azulene



SS841

Azulene Hot Wax 1kg

Block form – 9 blocks
Suitable for all skin types
Creamy based formula
Contains **Beeswax**
Contains Titanium Dioxide & Azulene



SS844

Passionate Pomegranate Hot Wax 1kg

Block form – 9 blocks
Suitable for all skin types
Creamy based formula
Contains **Beeswax**
Contains Titanium Dioxide & Azulene



SS897

Lavender Pearl Hot Wax 1kg

Block form – 9 blocks
Suitable for all skin types
Creamy based formula
Contains **Beeswax**
Contains Titanium Dioxide & Azulene



SS832



SS834



SS833



SS839



SS836

SS832 Pre Wax Lotion 250ml

SS834 **Alcohol-free** Pre Wax Lotion 250ml

SS833 Post Wax Creme 250ml

SS839 Post Wax Rose Oil 250ml

SS836 Citric Wax Cleaner 250ml

Mask Brushes & Accessories



1813 Mask brush with gold collett



175 Mask brush with silver collett



MX-SILIMASK-M
Silicon Mask Bowl Medium



MX-SILIMASK-S
Silicon Mask Bowl Small



STAD-MT6601
Plastic Mixing Spatula

Ingredients

These are the ingredients we advertise. Because the ingredients have a relatively short shelf-life we try to order as and when required and keep minimal stock levels



CALAMINEPWD
Calamine Powder 500g
Soothing and healing to inflamed skin
Ideal for sensitive or delicate skin types
Usually mixed with rose water
For extreme dry skin can be mixed with sweet almond oil



SULPHUR
Flowers of Sulphur 500g
Antiseptic & anti-fungal.
This mineral has a natural exfoliating effect on dead skin cells



FULLERS
Fullers Earth Powder 500g
Clay-like substance consisting of aluminium magnesium silicate Gentle exfoliant
Deep Cleansing
Binds other ingredients together



KAOLIN
Kaolin Powder 500g
Deep Cleansing & exfoliating
Mixed with water it makes an excellent after-wax mask to soothe



MAGCARBLITEKG
Magnesium Carbonate Lite 1kg
An absorbant Carbonate powder used to absorb liquids as a base ingredient in masks
Mildly astringent effect
Smooths & softens skins
Recommended for mature/dry skin



ZINCOXIDE
Zinc Oxide Powder 500g
Used as a protectant because of its soothing effects against skin irritations
Reflects & absorbs UVA and UVB rays, effective sunscreen
Minimal risk to sensitive skins
Some antimicrobial properties

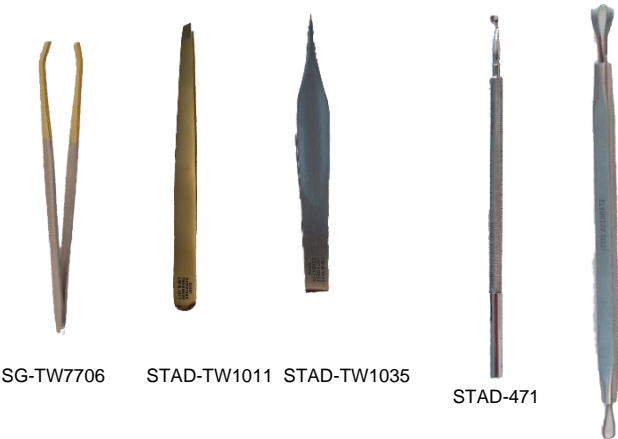


WITCHHAZEL
Witchhazel 500ml
Skincare/toning
Soothing properties



ROSEWATER
RoseWater 500ml
Emollient, cooling and toning property

Tweezers & Comedone Extractors



SG-TW7706 Crab-tip tweezer
STAD-TW1011 Slant narrow tweezer
STAD-TW1035 Ingrown Hair Tweezer
STAD-471 Comedone extractor (with lancet)
STAD-484 Comedone Extractor (double loop)

Sterilisers & Hygiene

A variety of sterilisers and hygiene products to keep your Salon or Spa in immaculate condition and ease your daily routines.



Fig. 1



Fig. 2



Fig. 3



Fig. 4

Fig. 1 Arctic Ice Brush Cleaner (ARC-BC100 & ARC-BC200) gently removes acrylic and gel residue from nail brushes without causing damage to the bristles. Pour brush cleaner into dappen dish, dip the brush into brush cleaner and allow to soak for at least 30 seconds. Wipe the brush on a clean paper towel. Repeat until brush is clean. Dispose of used Brush cleaner safely. Do not allow gel or acrylic to set or harden on brush.

Fig. 2 Arctic Ice Soak Off with lanolin 500ml (ARC-SOAK) Acrylic Remover with Lanolin gently removes acrylics, nail tips, glues, wraps and polishes without damaging the natural nails. The addition of lanolin prevents the cuticles from drying out.



Fig. 5



Fig. 6



Fig. 7

CODE	DESCRIPTION	Figure
ARC-BC100	Arctic Ice Brush Cleaner 100ml	Fig. 1
ARC-BC200	Arctic Ice Brush Cleaner 200ml	Fig. 1
ARC-SOAK	Arcic Ice Soak Off with lanolin 500ml	Fig. 2
HIBISPRAY	Hibispray 250ml (<i>diluted</i>)	Fig. 3
HIBI500	Hibiscrub Concentrate 500ml	Fig. 4
NNA4	Non-Acetone Polish Remover 125ml	Fig. 5
PA5	Pure Acetone 5 litre	Fig. 6
SB70/5LITRE	Isopropyl Alcohol 5 litre	Fig. 6
PLS-5	Anti-Bacterial Soap 5 litre	Fig. 6
PA	Pure Acetone 1 litre	Fig. 7
SB70	Isopropyl Alcohol 1 litre	Fig. 7
PLS	Anti-Bacterial Soap 1 litre	Fig. 7
NNA	Non-Acetone Polish Remover 1L	Fig. 7

Steritech



6009686750623

Steri Cleanse (301) Handwash 500ml

1 minute contact time allows for effective cleaning & disinfection

Amphoteric (adjusts to skins ph) – gentle

Broad spectrum Bactericidal, fungicidal

Virucidal, and sporocidal and efficacy

Replaces skins natural emollients without being oily

Safe and non-toxic



6009686750951

Steri Purify (101) 1 litre

Instrument & equipment sterility maintenance

Disinfection: 5 minutes

High-level Disinfection: 15 minutes

Chemical Sterilisation: 20 minutes

Broad spectrum Bactericidal, fungicidal

Virucidal, sporocidal and mycobactericidal efficacy

21-28 day window usage once decanted



6009686750876

Steri Purify (101) 5 litre

Instrument & equipment sterility maintenance

Disinfection: 5 minutes

High-level Disinfection: 15 minutes

Chemical Sterilisation: 20 minutes

Broad spectrum Bactericidal, fungicidal

Virucidal, sporocidal and mycobactericidal

efficacy

21-28 day window usage once decanted



6009686750401

Steri Fresh (201) 500ml

Broad spectrum surface disinfectant

Effective on any precleaned surface or equipment

Bactericidal, fungicidal, Virucidal, and mycobactericidal efficacy

Safe and non-corrosive



6009686752719

Steri Sanitise (601) Handgel 250ml

Waterless Hand Hygiene

Disinfects on contact

Evaporates quickly

Broad spectrum Bactericidal, fungicidal

Virucidal, sporocidal and mycobactericidal efficacy



6009686750340

Disinfecting Lubricant 300g

Disinfects instruments on contact

Operational temperature of between 5°C-50°C.

Lubrication will continue up to 80°C

Broad spectrum Bactericidal, fungicidal

Virucidal, sporocidal and mycobactericidal efficacy

Non-toxic and Non-corrosive.

Quadex



QDX-101-1LT Cold Sterilant 1L

For the safe, cold sterilisation and disinfecting of your surgical instruments and heat sensitive equipment.

Sterilises in 30 minutes and Disinfects in 5 minutes with a residual activity that keeps on killing microbes.



Non-toxic, Non-Corrosive, Non-Irritant, Non-Staining, Non-Caustic, Non-Carcinogenic, Biodegradable, pH Neutral. Contains no Aldehydes, Phenol or Chlorine.

QDX-101-5LT Cold Sterilant 5L



QDX-BACT Quadex Bacterinil 1L

HOSPITAL GRADE. RESIDUAL ACTION, NON-TOXIC, HARD SURFACE DISINFECTANT

A broad spectrum, ready-to-use general disinfectant, Bacterinil™ is recommended for disinfecting during normal day-to-day activities



QDX-BIGUAM1L Quadex Biguamine (wound wash) 1L

Biguamine™ Wound Wash contains the active ingredient Quadex® and is a Biguanide/Amine mixture. A non-prescription antiseptic liquid solution for first aid treatments. Allows you to gently wash dirt and grime from cuts, grazes and to cool and disinfect stings and burns. Protects against infection by cleaning and killing harmful microbes without touching or aggravating the sore, broken skin or wound



QDX- Quadex Wet Wipes™

Quadex® HIGH-LEVEL Disinfecting Wipes are ideal for the following professional applications: For use in all medical and dental areas, including theatres, clinics, dental surgeries, hospital wards trauma units, surgeries, emergency services applications, surface disinfection of machines (X-Ray, Mammography, Ultrasound etc.) and breathing apparatuses.



QDX- Cleansing Wipes – all purpose med level

For Neutralising Pathogens on ALL SURFACES, including countertops, trolleys and baskets, food preparation areas, children's toys and safe for use as hand wipes. Does not contain any known Carcinogenic Agents.

Medium Level: Kills 99.9% bacteria, viruses, fungi, mildew & algae. pH neutral. Wipes can be disposed of in regular landfills as they are biodegradable.



QDX-CITRUS DeWax Citric Wax Cleaner 1Lt

DeWax™ is a highly concentrated, environmentally friendly, non-toxic, naturally formulated solvent that is safe to use on all surfaces without leaving a residue. Citrus-fragranced DeWax™ is highly cost-effective and easy to use.

DeWax dissolves most oils.

A powerful, ready-to-use natural cleaner with an active ingredient called D-limonene. One of nature's most powerful solvents. D-limonene is derived from the peels of oranges, this means that not only is DeWax™ tough on grease, grime and dirt, but it is also made from completely renewable resources and leaves your home, shop, or workshop smelling citrus-fresh! DeWax dissolves most oils, waxes, glue and ink. DeWax contains no glycol ethos; it penetrates quickly, rapidly emulsifying food soils and grime.





QDX-ECOHAND1 Disinfecting Hand Wash 1L

EcoHand™ is a pH neutral almost red liquid disinfecting hand wash formulation developed specifically for daily use in the Industrial, Commercial and Household market where sanitising and regular washing of hands is required. EcoHand™ contains Twin Chain Quaternary Ammonium Compound combined with a high quality liquid soap and a soft Kiwi fragrance that will keep skin

nourished and

soft, despite regular washing. EcoHand™ is free of harsh compounds commonly used in liquid hand soaps that may be damaging to skin with regular washing. EcoHand™ hand wash kills germs and cleans away grime or dirt at the same time, leaving skin smooth and well cared for. It is a non-irritant, biodegradable, environmentally friendly product.

QDX-ECOHAND Disinfecting Hand Wash 500ml



QDX-MACD5L PolyMacro Fabric Cleaner 5L

Removes natural oils, grease, petroleum jelly and suntan lotion from fabrics.

Specifically formulated to remove organic oils from most fabrics including salad dressing, face creams, suntan lotion and face cloths. Follow dilution instructions, apply to an obscure area of your garment (to test colour fastness), agitate slightly and put through the normal washing cycle. Contains mild alkalis. Non-toxic. Non corrosive. Non-irritant. None staining. Economical to use. Versatile – removes a wide range of soils

QDX-MACD PolyMacro Fabric Cleaner 1L



QDX-MICROSOLVE Microsolve 1L

MicroSolve™ provides a three-in-one formulation that cleans, sanitises and disinfects. MicroSolve™ is specifically formulated for conditions where natural oils, grease and petroleum jelly can be problematic. MicroSolve™ works effectively to eliminate all residues. MicroSolve™ contains the anti-microbial agent Quadex® and a balanced range of detergents, sequestering agents, alkalis and grease cutters, providing a solution that eliminates pathogenic microbes responsible for the spread of disease

QDX-FOGDIY-PL QDX-FOGDIY-VAN Quadex Sterifog DIY 500ml Plain or Vanilla

Hospital grade high level disinfecting fogger

The constant flow of people in the environment and circulating air continuously bring in a new population of microbes that are the cause of many different diseases.

These microbes vary greatly in size, cell wall structure and ability to

withstand adverse living conditions. Some microbes have cell walls of thick protein or fat, others are covered by wax, starch or thick mucus.

Many, when exposed to extreme heat, cold or dryness form cysts that spring back to life when conditions become favourable. Fogging is the answer for areas where normal cleaning and disinfecting procedures are ineffective and microbes could be causing a problem. The product is applied with an atomising effect causing the particle size to be so small that it penetrates the hard to reach and touch surfaces. With this vaporising of liquid, a fine mist is suspended in the air and on surfaces which leaves all contact areas slightly moist for about 10 minutes.

USE STERIFOG BURST FOGGER TO:

- Disinfect your home.
- Tobacco Smell removal.
- Remove pet odour from your home.
- Eliminate odours from carpets.
- Remove odours from your kitchen.
- Get rid of smoke smells in your motor vehicle





QDX-FOG

Quadex Sterifog Fogger 350ml

Anti-microbial misting involves the use of STERIFOG™ in an aerosol micron diffuser to create a dry mist that permeates an entire small room facility up to 50 cubic meters. It is a form of germicidal shock treatment that bonds to virtually everything - killing 99.9% of all microbes that cause illness and odours. Sterifog™ is a two-step disinfecting process. Kills Bacteria, Viruses, Fungi, Mildew, Mould, Organic and Inorganic odours.



QDX-SG250
QDX-SG1LT
QDX-SG5LT

Sterigel Waterless Hand Sanitiser 250ml
Sterigel Waterless Hand Sanitiser 1 litre
Sterigel Waterless Hand Sanitiser 5 litre

SteriGel™ is a non-greasy, non-sticky, non-irritating skin care formulation that forms a silicone barrier on the skin surface to protect you from disease.

SteriGel™ contains Quadex® that kills 99.99% of most disease-causing microbes.

Whenever there is an absence of soap and the washing of hands with water is not possible, SteriGel™ becomes the best safeguard against bacteria when handling foodstuffs or patients where absolute cleanliness is essential.

Linens & Towels

A range of towelling products to suit the Salon and Spa needs



H-BAND

Towelling headband (stretch) with velcro



BOOTIE-T

Lined towelling booties for paraffin wax treatments



MITTEN-T

Lined towelling mittens for paraffin wax treatments



GOWN

Towelling gown/bathrobe (white)

One size fits all



BOOBTUBE

Towelling boottube (white)



PC/HOLE

Towelling plinth cover for all couches WHITE c/w hole

PC-ST

Towelling plinth cover for all couches STONE c/w hole

PC-T

Towelling plinth cover for all couches STONE c/w hole

PC/PORT

Towelling plinth cover for portable couch WHITE

No
image

MITTS towelling mitts pr for facials
MITTS-EL towelling mitts (pr) elasticised for facials

SKNlogic Skin Care

The Science of Beautiful Skin



The Philosophy.

Skin problems are very common today—polluted air and the stresses of everyday life have their reflection on the condition of our skin.

Karin Theunissen the founder of SKNLOGIC decided to rethink skincare and create functional and effective solutions for your skin.

SKNLOGIC Cosmeceutical skin care aims to provide a skin care solution that works with the skin's biological processes to achieve visible results. SKNLOGIC has a synergistic approach to science and nature, offering powerful fruit-based formulas with optimal concentrations of active ingredients to actively improve skin health and appearance from underneath the skin. International market trends and technological innovations initiate and drive product development. We are continuously upgrading formulations to ensure that we utilise the most stable and effective combination and concentration of active ingredients in our products. We use the maximum concentration of key active ingredients and use the highest grade of quality ingredients from around the world. SKNLOGIC products does not contain any common irritants or cheap fillers such as parabens, mineral oil, formaldehyde, glycols, artificial colourants or sulphates.

Why SKNLOGIC?

At SKNLOGIC we know that your skin matters, which is why we have gone through extraordinary lengths to ensure that our products are effective, safe and affordable. Our primary focus is Science, Knowledge and Nature, and because of this we have a synergistic approach to science and nature and work to fuse these two different concepts to create effective product formulations.

- SKNLOGIC offers products that are affordable and safe as well as effective.

We believe that effective skin care should be accessible to everyone, we believe in the future of the industry and as we all feel the economic burden

over the last few years, we realised that it was necessary to give the industry a product that is affordable to their clients but is still result orientated.

- We choose packaging that has the lowest cost possible to ensure that most of the cost of the product is made up out of the active ingredients in the product.

- Skinlogic is manufactured locally, which means saving on transport costs, customs duties and the ever weakening Rand does not affect the product in a major way.

- Our passion for the skin and the industry means that we are not in it to make a profit, but to be involved in the process, learn new technologies and be a part of the community.

- SKNLOGIC is a cosmeceutical range of products.

Cosmeceutical products have a more physiological effect than cosmetic products as they contain antioxidants, exfoliators and other intercellular ingredients that are necessary to support the natural structure of the skin. SKNLOGIC facilitates an active process of reversing the signs of damage in the skin.

- SKNLOGIC products does not contain mineral oil, parabens, formaldehyde, sulphates or artificial colourants. Wherever possible we try and use nature-identical ingredients.

- Fragrance has the ability to evoke strong emotional reactions, studies have shown that light uplifting fragrances can improve our mood and sense of well-being. For this reason we wanted to include a fruit fragrance in the products. SKNLOGIC uses Flavours, which is a nature-identical aroma that does not contain any of the 36 known allergens that can be found in perfume.

- None or very limited transitional (crisis) period when starting on the range.

- SKNLOGIC is a privately owned company managed by people with a passion and drive for the beauty industry, driven first by education and research. We take pride in being true pioneers in the industry, never wavering on our initial vision of skin health and the skin health professional.

- We have not taken part in animal testing.

- We have designed specialised treatments that will not only treat the skin but leave it feeling nourished and pampered.

- SKNLOGIC is sold only where professional consultation and professional treatments are performed by professional skin therapists.

- SKNLOGIC skin care consultation wheel will simplify the consultation stage and prescribing products to your client.

- SKNLOGIC offers a solution for every skin type, gender and age.

- We have initiated the Sowing Good Seeds project, where we help with the upliftment of under privileged communities in Africa.

- We source the best active ingredients from various superior laboratories based all over the world.

Cleanse



SKNgentle cleanse cream

A rich creamy cleanser especially designed for Dry and Dehydrated skin that is gentle enough for sensitive skin. Gently lifts impurities from the skin while hydrating the skin, leaving it feeling conditioned and nourished.

200ml Retail & 500ml Professional



SKNremove

A non-irritating and waterless make-up remover as well as a pre-cleanser that will efficiently remove make-up, oil secretions and impurities without drying out the skin. Safe to use around the eye area. Pineapple extract purifies the skin. Suitable for all skin types.

200ml Retail only



SKNcleanse gel

A gel cleanser that gently lifts impurities without disturbing the skin's natural balance, especially designed for oily skin. Grapefruit extract assists with skin discoloration while improving the appearance of oily skin.

200ml Retail & 500ml Professional



SKNcleanse wash

Especially designed for Normal and Combination skin. Gently lifts impurities from the skin while Pomegranate extract tones and soothes the skin, leaving your skin feeling supple and refreshed.

200ml Retail & 500ml Professional

Tone



SKNtone

Intensively removes all residue impurities, improves the skin's overall tone, and prepares the skin for treatment. Kiwi extract protects against potential skin degeneration. Your skin will feel smooth and healthy. Suitable for all skin types.

200ml Retail & 500ml Professional

Exfoliate



SKNexfoliate enzymatic

A powerful skin polisher that combines natural and chemical exfoliants to refine skin texture and enhance penetration of actives into skin, while papaya extract not only works as an enzyme but works to repair the skin as well. Suitable for all skin types.

75ml Retail & 200ml Professional



SKNexfoliate

A powerful skin polisher that combines natural and chemical exfoliants to refine skin texture and enhance penetration of actives into skin, while papaya extract not only works as an enzyme but works to repair the skin as well.

75ml Retail & 200ml Professional



SKNmasque restore

A powerful masque of concentrated antioxidant vitamins from the AHA rich Pomegranate fruit help skin recover from damage while enhancing barrier properties and restoring the skin's natural health.

75ml Retail & 200ml Professional



SKNLOGIC
skincare





SKNmasque hydrate

A creamy, moisture-replenishing masque that provides vital nourishment for dry skin. Assists in alleviating fine lines and restoring the skin's suppleness, while Fig extracts hydrates the skin, leaving it feeling conditioned and nourished.

75ml Retail & 200ml Professional

Restore



SKNclarify

A skin-clarifying day or night treatment that helps clear skin, calm inflammation and prevent future breakouts. Banana extract soothes while treating blemishes and moisturising the skin.

75ml Retail only

Hydrate



SKNmoist Gel

A lightweight gel that works to combat surface dehydration while balancing the skin and improving the appearance of oily skin. Grapefruit reduces fine wrinkles and assist with skin discolouration.

75ml Retail & 200ml Professional



Night Plus

A treatment cream with growth factor peptide and Hyaluronic acid that combats prematurely-ageing skin conditions while it repairs and protects. Reduces the appearance of fine lines and wrinkles while improving the texture, tone and colour of the skin.

50ml Retail only



SKNmoist

A moisture-replenishing day and night cream that hydrates, rejuvenates and balances the skin. Pomegranate extract acts as a natural toner while protecting the skin from free radicals.. Especially designed for Normal and Combination skins.

75ml Retail & 200ml Professional



SKNdiminish day

SKNdiminish day is a day cream with pigment-regulating formulation that provides fading of the skin and free-radical protection.

50ml Retail only



SKNmoist supreme

An ultra-rich moisturizer designed to combat dry skin and reduce the signs of premature aging. Fig extract an excellent hydrator, also provides a gentle tightening effect to the skin.

75ml Retail & 200ml Professional



SKNdiminish night

SKNdiminish night is a night cream with pigment-regulating formulation that provides fading of the skin and free-radical protection

50ml Retail only



SKNnight

A night cream that combats prematurely-ageing skin conditions while it repairs and protects. Infused with the anti-ageing benefits of apple extract to revitalize the skin. Reduces the appearance of fine lines and wrinkles while improving the texture, tone and colour of the skin.

75ml Retail only



SKNboost

A concentrated, brightening and rejuvenating cream that combats prematurely-ageing skin conditions while it repairs and protects. Infused with the anti-ageing benefits of apple extract to revitalize the skin. Reduces the appearance of fine lines and wrinkles while improving the texture, tone and colour of the skin. Can also be used on dull skin due to season changes.

75ml Retail only



SKNhydrating serum

An intense treatment for additional hydration and anti-ageing support. A light cream concentrated serum based on a high hydration profile of ingredients that delivers immediate moisture to saturate and refresh dehydrated skin. The serum also compliments the rejuvenation process

30ml Retail only



SKNmulti active lotion

Includes a high concentration of Alpha and Beta Hydroxy acids (14%) in a light weight emulsion as an intensive treatment for increased cell turnover to restore skin suppleness, clarity and texture. This active treatment optimizes skin rejuvenation, treats hyper-pigmentation, dehydration and problematic skin.

50ml Retail only



SKNeye cream

A rejuvenating blend of ingredients infused with the anti-ageing benefits of apple extract to revitalize the skin. Reduces the appearance of fine lines and wrinkles while improving the texture, tone and colour of the skin around the delicate eye area.

15ml Retail only



SKNeye revitalise

This soothing eye relief moisturising gel will help to clear congestion around the eyes that causes puffiness and dark under eye circles. Mandarin extracts assist in purifying and re-balancing the skin while promoting a finer textured skin.

15ml Retail only



SKNprotect

SKNprotect is a sun protection cream that offers provides a certified high broad spectrum UVA/UVB protection and anti-ageing benefits. Raspberry extracts aids in healing after sunburn and reduces scar formation. SKNprotect is a non-whitening formula and is suitable for all skin types. Does not contain Octyl Methoxycinnamate..

75ml Retail only

Body



SKNrenew foot balm

An ultra-rich hydrating Foot balm that works to deeply help repair, soothe, revitalize and protect dry, tired feet. Delivers a compound of hydrating Sunflower oil, Wheat germ oil, Fig & Cucumber extract, orange oil and Shea Butter to help soothe sore joints, hydrate and protect extremely dry, cracked skin.

75ml Retail & 200ml Professional



SKNbody candle *pineapple*

An ultra-moisturising, nourishing body candle, which can be used as a massage oil or a body moisturising oil. The formulation is a soy and paraffin wax free formulation that comes in a Pineapple fragrance with Pineapple fruit extract. Packaged in a box. Does not contain Parabens, Sulphates, Synthetic Fragrance, Synthetic Colourants, Lanolin derivatives, Mineral oil or MIT's.



SKNbody candle *fig & vanilla*

An ultra-moisturising, nourishing body candle, which can be used as a massage oil or a body moisturising oil. The formulation is a soy and paraffin wax free formulation that comes in a Fig & Vanilla fragrance with Fig extract. Packaged in a box. Does not contain Parabens, Sulphates, Synthetic Fragrance, Synthetic Colourants, Lanolin derivatives, Mineral oil or MIT's.

Professional Treatments - footcare

SKNrenew callus liquid

SKNLOGIC bodycare

Say goodbye to dry, cracked heels!

Get smoother, softer feet with:

• **Renew Callus Liquid**, with Papaya extract, effectively removes cracks and calluses from dry and damaged feet.

• **Renew foot balm**, with Shea Butter, Fig & Cucumber extract, hydrates and seals in essential moisture on the feet.

* DOES NOT CONTAIN PARABENS, SULPHATES, SYNTHETIC FRAGRANCE, SYNTHETIC COLOURANTS, LANOLIN DERIVATIVES, MINERAL OIL OR MIT'S.



Professional Treatments - facials

SKNlogic offers intense treatments for anti-ageing support. Therapists must have a somatology/beauty therapy qualification from an accredited training institution. Passing the Training is a prerequisite.

MULTIPEEL CHEMICAL PEEL SYSTEM

PEEL AWAY MULTIPLE IMPERFECTIONS



Fine lines – Wrinkles – Blackheads – Clogged pores – Acne marks and scars – Age spots – Uneven skin tone – Hyperpigmentation - Dehydration

The Sknlogic multi peel is a multi-purpose, time dependent superficial peeling agent. It provides a safe, controlled and predictable procedure that gradually removes surface skin cells resulting in improvement of skin texture with no downtime. The Sknlogic multi peel utilises both Alpha and Beta-hydroxy acids with other active ingredients to treat the skin. The result is skin that looks fresher with less visible damage such as fine lines and dark spots.

40% Glycolic acid – exfoliates the skin while treating fine lines, acne, blackheads, dullness and oiliness.

9% Lactic acid – Stimulates collagen production, evens out skin tone and hydrates the skin

9% Malic acid – Increases collagen production, tightens the pores and treats fine lines and wrinkles

2% Salicylic acid – Treats acne, blackheads, inflammation and has a deep pore cleansing action

5% Bearberry extract – Effectively lightens spots and dark areas on the skin

D-Panthenol (B5) – Improves skin hydration, soothes irritated skin and enhances skin regeneration and healing.

SKNPEN COLLAGEN INDUCTION THERAPY



Treat pigmentation, uneven skin tone and texture | Improve acne scars | Diminish fine lines and wrinkles | Improvement in pore size | Increase collagen and elastin production | Reduction in Sagging skin | Treat Stretchmarks.

Sknlogic’s Sknpen is an advanced medical grade automated fractional microneedling device offering a powerful German motor and adjustable needle length. Sknpen is safe on most skin types and is used to treat and improve conditions like acne scarring, fine lines and wrinkles, sagging skin, uneven skin texture, enlarged pores and pigment marks from sun damage or acne. Microneedling with the skNpen gently stimulates the skin with very fine needles that encourage natural collagen production.

Microneedling treatments have proven more effective than surgical treatments, laser resurfacing and chemical peels in stimulating the production of collagen and elastin, which reinforces the skin, removes the wrinkles and smooths the scars. Microneedling can also be done at a fraction of the cost when compared to surgical treatments.

Facial Equipment



- PQ-707 Facial Steamer**
- **With stand/wheels**
 - On/Off switch
 - Ionic component (high quality steam)
 - Ozone treatment
 - Timer
 - Normal steam
 - Fully adjustable
 - Chrome metal handles
 - Height adjustable
 - Glass beaker (not plastic)
 - All chrome metal steam housing



- PQ-707WALL Facial Steamer**
- **Wall mount**
 - On/Off switch
 - Ionic component (high quality steam)
 - Ozone treatment
 - Timer
 - Normal steam
 - Fully adjustable
 - Chrome metal handles
 - Height adjustable
 - Glass beaker (not plastic)
 - All chrome metal steam housing



- PQ-6801 Magnifying lamp**
- **With stand/wheels**
 - Self-adjusting & springless
 - Modern slim design head to enhance your salon
 - 5 dioptré lens



- PQ-6801TC Magnifying lamp**
- **With table clamp**
 - Self-adjusting & springless
 - Modern slim design head to enhance your salon
 - 5 dioptré lens



- PQ-6808 LED Magnifying lamp**
- **With stand/wheels**
 - Shadow-free LED light
 - Cool lamp (very bright)
 - Long-lasting energy saving light
 - Concealed springs
 - 3 dioptré lens



- PQ-6808TC LED Magnifying lamp**
- **With table clamp**
 - Shadow-free LED light
 - Cool lamp (very bright)
 - Long-lasting energy saving light
 - Concealed springs
 - 3 dioptré lens



- GM-6009 Woods Lamp**
- UV globes
9w x 4 = 36W
 - On/off switch
 - Removable hood



*Price excludes stand and laptop

L6021 Skin Analyser (excludes stand & laptop)

An advanced and highly detailed full face skin analysis system provides an excellent boost for any Salon or Skin Professional business. The ability to store your product and treatment details and prices in the program is an added benefit. It allows the client to see up close the severity of their skin condition through accurate professional analysis which will motivate them to proceed with your prescribed set of treatments that the system can generate. Not only can each clients results be saved under their personal profile for future sessions and monitoring, the system can, on demand, provide before and after comparison reports.



GM-2029 Galvanic Machine

- Fully adjustable frequency control
- Complete with set of galvanic rollers



GM-4010 Galvanic/HF machine

- Fully adjustable frequency controls
- Separate control for each function
- Complete set of galvanic rollers & high frequency electrodes
- On/Off switch



Model:M-4012
Function:high-frequency
Meas:35x34x16.5cm G.W.:3.5kg

GM-4012 High Frequency Machine

- Full set of HF electrodes
- Fully adjustable frequency control system
- Frequency regulator system



GM-2028 Frimotor machine

- Variable speed control
- Rotates clockwise & anti-clockwise
- Includes facial brushes
- On/off
- Spare facial brushes available to order





GM-4050 Skin Scrubber

A versatile machine that deep cleanses the face removing dead skin cells and diminishing the appearance of fine lines & wrinkles. Ultrasonic technology allows creams solutions to penetrate more deeply into the skin. 70 000 vibrations per second.



PQ-MDERM Microderm machine

2-in-1 machine with microcurrent 'lifting' & galvanic



GM-2009 UV Steriliser

- Reclining door
- Stainless steel tray (removable)
- Size: L42xH27.5x W28.5cm



PQ-UVSC13 UV Steriliser

- Blue transparent lid
- Stainless steel tray (removable)
- 7 litre capacity
- 8 watt power
- ABS plastic
- ABS plastic
- Carton size: L43xH34xW18 cm



PQ-UVTW UV Towel Warmer

- Volume 12litre
- Power: 230V/220W
- Measurements: 50.5x38x34cm
- G.W.: 9kg
- N.W.: 8.5kg

Body Equipment



PQ-608 Body Shaping Machine

- Variable speed regulator
- Timer
- 8 piece body shaping accessories (included)
- Stand with wheels
- Utensil tray
- Heavy duty motor



PQ-IRCAPS

Infra-Red Capsule

- 2 zone sauna
- Separate temperature control for upper and lower body
- Body mat



GM-1010

Infra-Red Lamp

- Adjustable head
- Own stand/wheels
- Bulb Type: R40
- Socket Type: E26/E27 (Screw in type)
- Wattage: 250 watts
- Voltage: 240 volt
- Rated Life: +- 5000 hours



PQ-SL16

16 pad slimming machine

- Computerised
- EMS



PQ-SL24

24 pad slimming machine

- Computerised
- EMS

Furniture



PQ-HYDRAULIC Hydraulic Facial Chair

Features:

Heavy-duty hydraulic lift pump
Manually adjustable back rest and leg rest
Removable arm rests and pillow
Facial hole
Rotates 360°

Specifications:

- Upholstered in vinyl
- Heavy Duty Hydraulic pump
- Height adjustment from 23cm to 31cm
- Back rest adjustment from 0° flat to 85° incline
- Leg rest adjustment from 0° flat to 90° decline
- Rotates 360° in horizontal direction and can be locked in any position.

Capacity 100kgs distributed weight

Shipping Dimensions:

Package : 105x65x 85 (L x W x H)

Package weight: 73kgs.





PQ-ELECTRIC Electric Facial Chair

Strong design and offers a range of versatile settings up or down. Can be setup to do facials, manicures and pedicures. Controlled by hand held remote control

Single Motor electric facial chair

Manually adjustable back rest and leg rest

Removable arm rests and pillow

Facial hole

Specifications:

Upholstered in PU leather

Heavy Duty Electric Motor

Height adjustment from 23" to 31"

Back rest adjustment from 0° flat to 85° incline

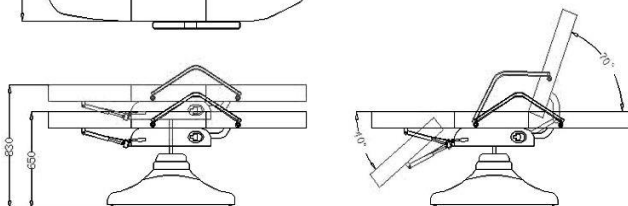
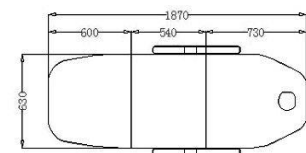
Leg rest adjustment from 0° flat to 90° decline

Capacity 100kgs distributed weight

Shipping Dimensions:

Package: 105" x 65" x 85" (L x W x H)

Package weight: 83kgs.



PQ-COUCH-103 Metal Massage Couch

- White PU leather
- Adjustable backrest
- Ventilated shelf
- Dimensions: H72xW70xL185cm
- Strong Legs 80mm



PQ-COUCH-161 Standard Wooden Couch

- Imported hard wood in dark wood finish
- Dimensions: L186xW77xH77cm
- Weight 40kg
- Breathing hole
- Fully adjustable backrest
- Stability control for uneven floors



PQ-WT005C Portable Massage couch

- Fully adjustable backrest
- Breathing hole plus face cradle
- Made with imported beechwood & black PU leather
- Dimensions L223xW70xH63-82cm
- Carton Size: 100x70x24cm Weight 15kg
- CE & RoHS tested
- Free splashproof carrybag



PQ-PEDICHAIR

Reclining Pedicure Chair

- White PU leather
- Reclining with legrest
- Measurements: L74xH57xW68 (reclining) 1.6m fully reclined
- Ideal for manicures & Pedicures
- Armrest attachment is an optional extra



PQ-PEDICOUCH Pedicure Couch

- Fully adjustable reclining couch
- 3 piece mani/pedi couch
- Can be used as a massage couch (breathing hole)
- Extra cushions for added comfort
- Leg extension, pull out stool
- Dimensions: L131xW82cm (main couch)
L xW cm (leg extensions)
30x30cm (pull out stool)



AS-CASE Aluminium Makeup case (black)

- 2 extendable drawers with separate compartments
- Deep internal storage with separate compartments
- Quality aluminium case with Shoulder carry strap



PQ-R001 Deluxe Nail Table

- Square top Glass working area
- 4 drawers
- Cubby hole for Gel lamp storage
- Chrome leg that can be tightened for stability
- White gloss finish
- Each of 4 'feet' can be individually stabilised

Dimensions: L115 x W40 x H80cm



Portable nail table comes with free carry bag

PQ-NAILTABLE Portable Nail Table

- Collapsible table and portable
- Single drawer
- Handrest cushion
- Dimensions: L90xH73xW50cm
- Free carry bag



PQ-BRSTOOL-397W
White backrest stool



PQ-BRSTOOL-397B
Black backrest stool

- Stool with backrest
- Fully Adjustable up and down
- Wheels
- Chrome finish



PQ-STOOLW
White therapist stool



PQ-STOOLB
Black therapist stool

- Round Stool
- Fully Adjustable up and down
- Wheels
- Chrome finish



PQ-S/STOOLW
White Saddle stool



PQ-S/STOOLB
Black Saddle stool

- Comfortable Saddle shape
- Fully Adjustable up and down
- Wheels
- Chrome finish



PQ-TROLLEY56W
White Trolley



PQ-TROLLEY56B
Black Trolley

- Tempered frosted glass
- Glass can be removed for easy cleaning
- Heavy duty wheels
- Dimensions: H83xL48.5xW36.5cm

For full details see our independent Furniture & Equipment Catalogue

Airbrush Systems



A-C8 Airbrush compressor only (excl large airbrush gun)
Suitable for large area applications like body painting and spray tan
Large airbrush gun to be purchased separately



A-AG9 Airbrush gun small
To be used with A-C10 machine



A-AG8 Airbrush gun large
To be used with A-C8 machine



A-C10 Compressor c/w airbrush gun (small)
Complete kit for Nail art or for MC Airbrush Makeup application

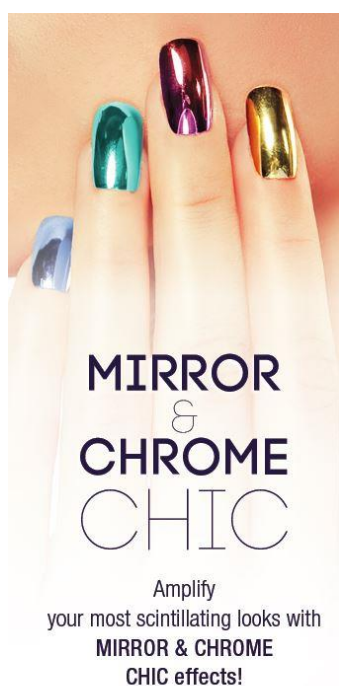


Can purchase a separate A-AG9 airbrush gun for Nail art if you want to keep makeup and Nail Art separate

For full details of our Professional Makeup Range please see our **MCC** Makeup Catalogue



For our Nail Art Range please see our Nail Art Catalogue



Hair Accessories

We stock a 8-piece Genuine hair pieces (clip-in extensions)



18" in length, 80g total weight

1 x 20cm with 4 clips
2 x 15cm with 3 clips
3 x 10cm with 2 clips
2 x 5cm with 1 clip
3.8cm clips

Genuine hair so can be coloured or bleached

#4 Medium Brown
#7 Dark Blonde
#9A Medium Blonde
#12 Dirty Blonde

How to wear clip in hair extensions



Scissors



STAD-380S

Hairdressing Scissors S/Q hollow
Adjustable dial
5.5" size only



STAD-757

'Jaguar type' Hairdressing Scissor
Available in 5", 5.5" and 6"

Terms & Conditions

Upfront Distribution reserves the right to only supply Professionals who are qualified in their discipline and to students attending a recognised, registered Training Institution. We do not supply members of the public or persons who have not achieved the required industry standards and recognised qualification to practice.

The information contained in this catalogue is an overview intended for awareness purposes only. Please kindly check models & features prior to ordering.

While we strive to provide accurate information in this catalogue, certain changes in standard equipment, options, prices, availability or delays may occur that may not be reflected. Upfront Distribution reserves the right to change product specifications at any time without incurring obligations. Options shown or described are available at an extra cost and may be offered only in combination with other options or subject to additional ordering requirements or limitations. Images on this site may depict optional equipment. The brand mark and logos are owned by Upfront Distribution and any use of such marks is prohibited

Buying facility:

To purchase products from Upfront Distribution you will be required to register your business or self-prior to ordering. Please complete a "Client Profile" form. When your "Client Profile Form" has been accepted and approved you will eligible to purchase products.

How to order:

Once a buying facility has been set up you may place your orders in the following manner –

- Telephonically – your order will be repeated back to you to ensure accuracy
- Fax – on receipt of your fax a Proforma Invoice will be sent for confirmation and payment
- Email – order will be confirmed by a Proforma Invoice for confirmation and payment

Payment Options:

- **Credit Card (excludes Distributors & Discounted Orders)**
- **Bank Deposit or EFT (proof of payment required)**
- **Cash payment**

For your convenience EFT payment transaction is also available at our offices.

Office Hours:

Monday – Thursday: 08:00 – 16:30
Fridays: 08:00 – 15:00

Closed public & Religious holidays.

Delivery schedule:

To qualify for FREE delivery for your region ask our sales team member how you can benefit for FREE delivery.

Confirmation of payment must be received by us before goods are despatched with the appointed courier. Freight charges are for the buyers account except where 'FREE delivery' is applicable. Insurance will only be added at clients written request. Should we be responsible for the delivery you will receive a message informing you of the tracking number so that you can track the delivery and anticipated time of your order.

Our sales team and enquiries:

- Sales ~ Bonga bonga@upfrontdistribution.com
- Sales ~ Tsholo tsholo@upfrontdistribution.com
- Sales ~ info@upfrontdistribution.com

Contact Details

Head Office & Showroom:

55 Smiso Nkwanyana Road (old Goble Road)
Morningside, Durban

Postal Address:

Suite 100 Private Bag X 504
Northway 4065

Telephone: 031 312 3502, 031 312 0865, 031 312 1266,
031 312 7128 Select '1' for Sales

Banking Details:

Bank: First National Bank (FNB)
Account Name: Upfront Distribution
Business Account: 628 186 67183
Branch Code: 220526

Please Note:

- **Upfront Distribution uses a rounding facility to the nearest 10c**
- **Upfront Distribution reserves the right to change prices without prior notice. Prices are calculated according to exchange rate at the time of receipt and therefore prices will vary in accordance with fluctuations in the Rand**
- **Upfront Distribution only supplies to Professional persons who have trained in the use of products and equipment and cannot be held responsible for any injury or damage to person or property due to misuse of products/equipment**
- **Colours depicted in our Catalogue are not always exact**
- **Full T&C's are available on our website and on request.**